



---

**SIDE HUNG WINDOWS**

---



**C13.11**  
**HANDLES AND**  
**CONNECTION PIECES**

01.03.2018



---

HANDLES AND CONNECTION PIECES

---

**CONTENTS**

<b>1. General</b> .....	C13.11.03
<b>2. Handles</b> .....	C13.11.05
2.1. Handles series 502, 5020, 503 and 5030	C13.11.05
<b>3. Connection pieces</b> .....	C13.11.06
3.1. Connection piece set n° 568-10	C13.11.06
3.2. Drive pins	C13.11.07
3.3. Salto connection piece n° 4600-...	C13.11.07
3.4. Drive pins for connection piece n° 4600-...	C13.11.08
3.5. Chrono connection pieces n° 24000-700 and 24000-701	C13.11.09
3.6. Drive pins n° 10000-721-..	C13.11.09



## 1. General

### Limitations and conditions

- Sobinco can also provide you a solution for side hung open out windows. This chapter only provides you an overview of the possibilities regarding handles and connection pieces.
- Please may we ask you to send us always your profile drawings as well as all necessary additional information so that we can provide you the best solution. The following information is very important:
  - frequency of use (balcony doors, window doors)
  - vent dimensions
  - vent weight
  - wind pressure
  - type of building
  - number of windows
- The net opening for standard windows must be limited to 200 mm with a window stay to prevent that:
  - the windows would be blown over
  - the fittings, more exactly the hinges, would get damaged
  - persons would fall through the window when operating the window
  - persons at the outside would get hurt when opening the window
- Hinges:
  - Special visible hinges which are secured by means of a security pin to prevent removal of the hinge pin, only for standard windows.
  - Door hinges only for balcony doors.
  - Concealed Invision Pro hinges (clampable), for standard windows as well as balcony doors.
  - Concealed Invision Go hinges (clampable), only for standard windows. They may under no circumstances be used for side hung open out balcony doors or window doors.
- The available mounting surface for the handle is limited due to the configuration of profiles for side hung open out windows.

### Possibilities

- The profiles can be designed in several ways:
  1. With eurogroove on both internal and external side of the profiles
    - Possibility to fit hinges.
    - Distance between handle and locking system is small: short fork, simple connection piece.
  2. With eurogroove on the external side of the profiles
    - Possibility to fit hinges.
    - Distance between handle and locking system is big: long fork (disadvantage), special connection piece may be necessary.
  3. With eurogroove on the internal side of the profiles
    - Hinges are not possible, only friction hinges.
    - Distance between handle and locking system is small: short fork, simple connection piece.
  4. Without frame groove, only vent groove
    - Hinges are not possible, only friction hinges.
    - Clampable keeps are not possible: screwed keeps.



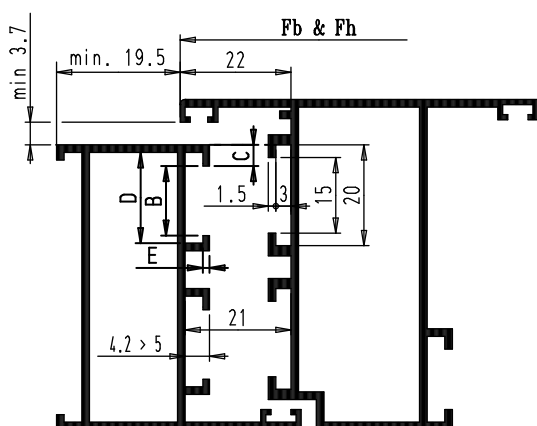
## HANDLES AND CONNECTION PIECES

**Standard windows**

- Vent width: max. 1400 mm.
- Vent height: max. 2400 mm.
- Vent weight:
  - visible Chrono hinges: max. 90 kg.
  - Chrono Invision Go hinges: max. 90 kg.
  - Chrono Invision Pro hinges: max. 130 kg.
- **The maximum opening must be limited to 200 mm!**

**Balcony doors/window doors**

- Visible hinges:
  - it's required to provide door hinges:
    - 2-part Euro hinge n° 2800-2 or -4
    - 3-part Euro hinge n° 83201-1
  - it's required to provide one door stay:
    - n° 684-420:  $F_{bmin}=750$  mm or
    - n° 684-500:  $F_{bmin}=900$  mm
- Concealed hinges:
  - it's required to provide Chrono Invision Pro hinges.
  - it's required to provide two window hinges n° 35140-902.
- Vent width:
  - visible hinges: max. 1400 mm, according to the vent weight and the ratio height/width.
  - concealed hinges: max. 1200 mm.
- Vent height: max. 2400 mm.
- Vent weight:
  - 2-part Euro hinge: max. 120 kg.
  - 3-part Euro hinge: max. 180 kg.
  - Chrono Invision Pro hinges: max. 130 kg.

**Profile dimensions**

B (mm)	C (mm)	D (mm)	E (mm)
13,8	4,2	18	1,5
12,5	3,9	16,8	1,5
12,1	2,9	15,3	1,5
10	4,2	14,8	1,5
14,1	4,2	18,5	2,5
13,5	3,5	17,5	2,5

**Information hinges:**

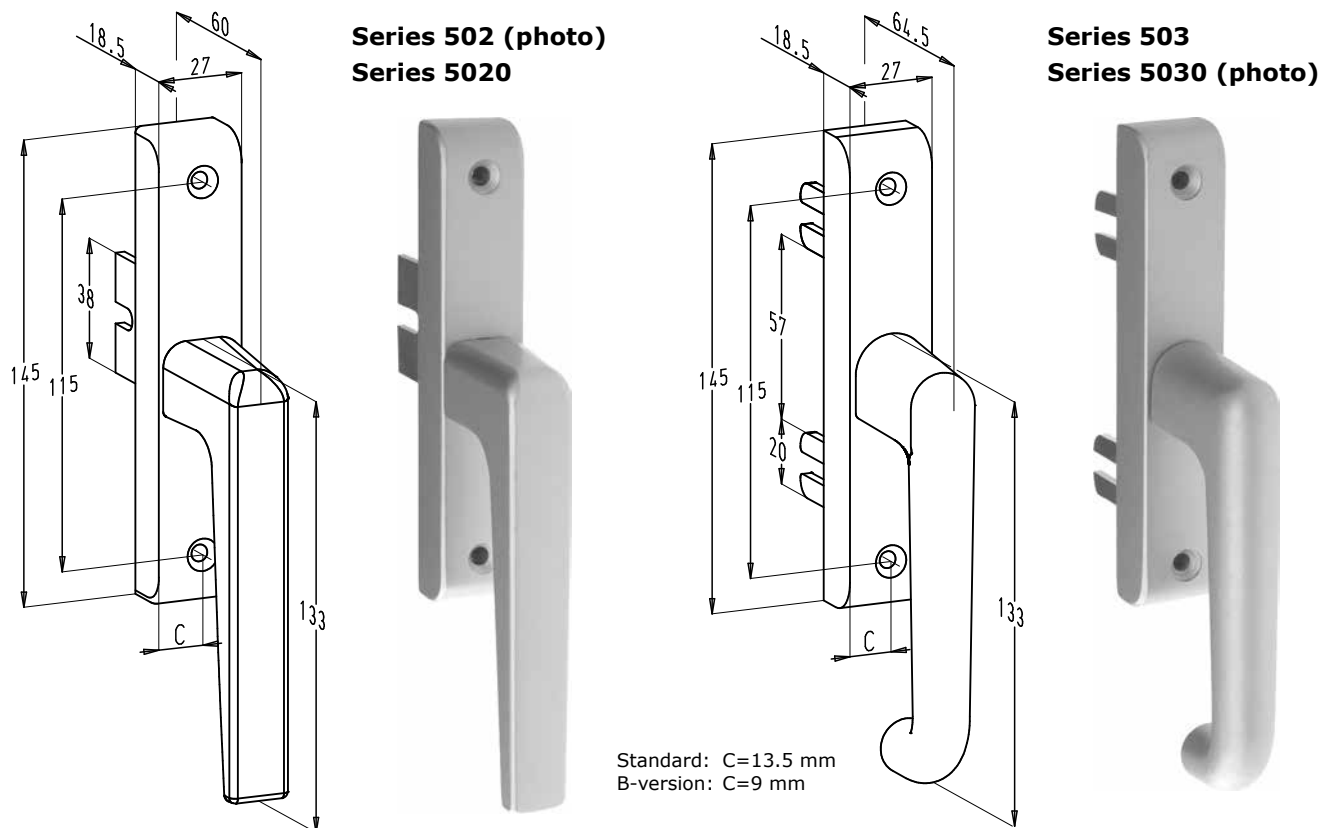
- Window hinges: see chapter C13.12.
- Door hinges: see chapter K15.11.



## 2. Handles

### 2.1. Handles series 502, 5020, 503 and 5030

- For more information regarding these handles, see chapter H13.11.

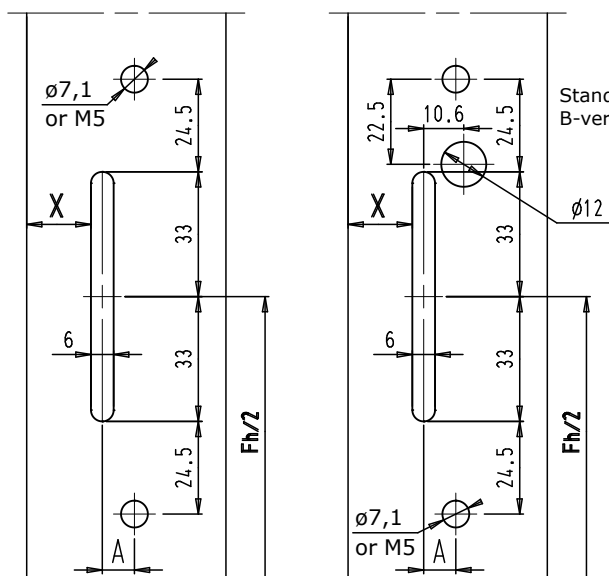


- Preparations:

#### Handles with 1 fork (502 and 5020)

Without cylinder

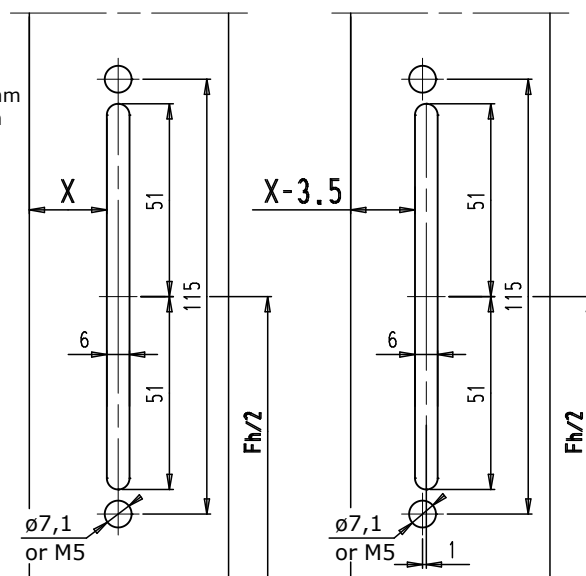
With cylinder



#### Handles with 2 forks (503 and 5030)

Fork in the middle

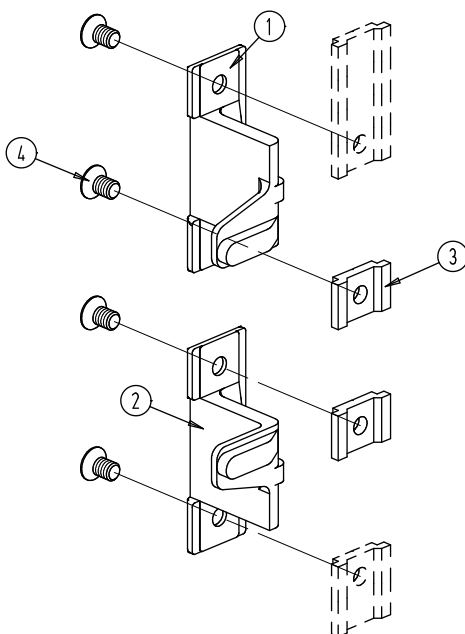
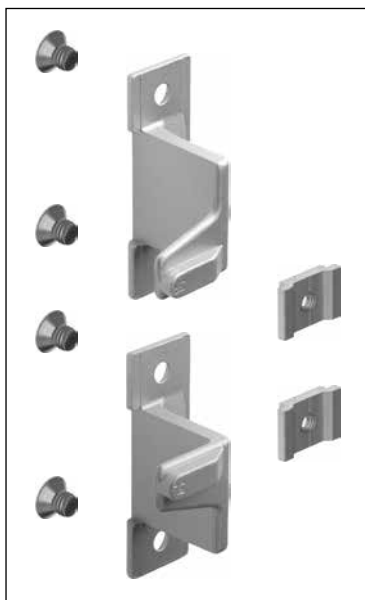
Fork out of centre



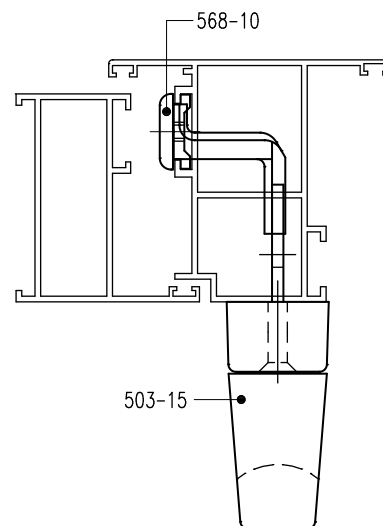
- Only the handles with 1 fork are possible with cylinder.
- Dimension X is profile-related.
- The handles are preferably fixed with blind rivnuts. Therefore you must drill holes with diameter  $\varnothing 7.1$  mm. Fixing holes M5 when you fix directly in the profile.



## HANDLES AND CONNECTION PIECES

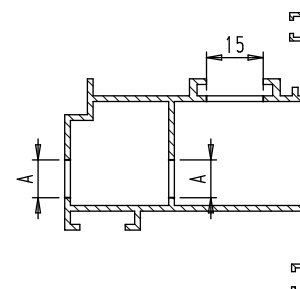
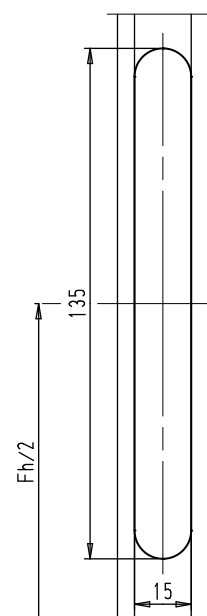
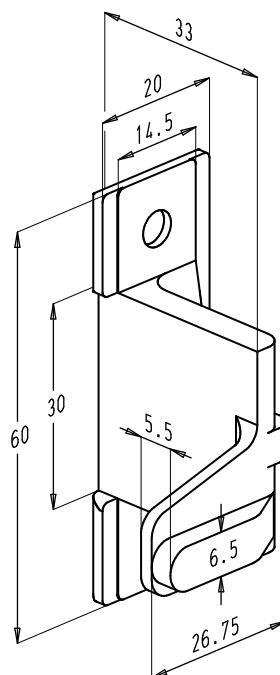
**3. Connection pieces****3.1. Connection piece set n° 568-10**

Installation example



Connection piece set n° 568-10		
1	568-3R	right hand connection piece (1)
1	568-3L	left hand connection piece (2)
2	568-2	clamping piece (3)
4	M5x6 DIN 965	screw (4)

Milling

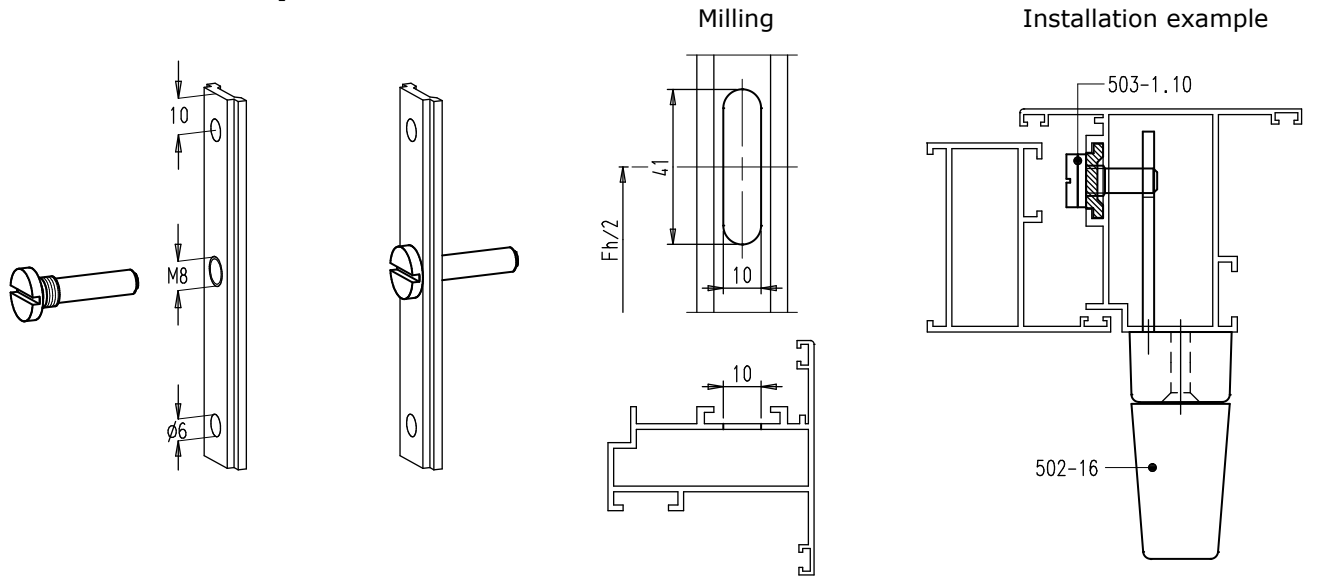


- The set is used in combination with handles series 503 or 5030.
- When you want to apply handles 502 or 5020 you only need half of the set (single fork). These parts are ordered separately.
- This set is required when the profiles are deeper and at the same time the groove is close to the external face of the profiles.
- The cut-out for the handle may be different from the ones on the previous pages because the connection pieces must be turned in the profiles while mounting them resulting in a wider cut-out: see dimension A.

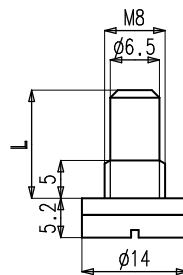


HANDLES AND CONNECTION PIECES

3.2. Drive pins

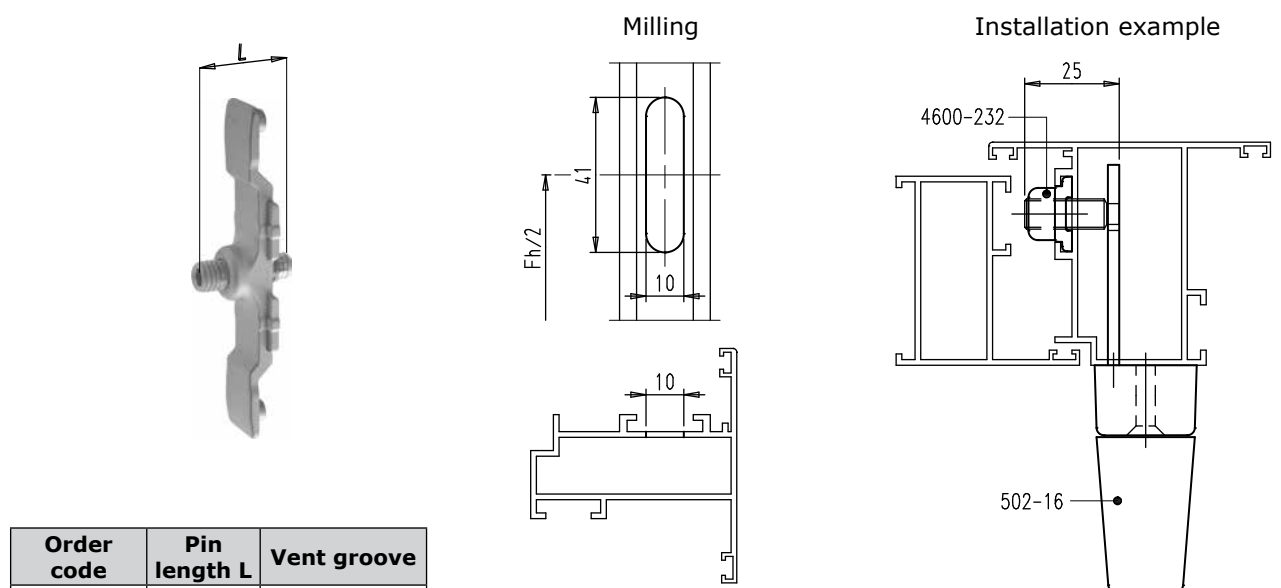


Order code	L mm
503-1.10B	13
503-7.10	14.5
503-1.10	19
503-1.10C	22
504V-1.10	23
503-2.10	28
502-16.10	31



- The stainless steel drive pin which fits in the slotted fork, must be ordered separately.

3.3. Salto connection piece n° 4600-...



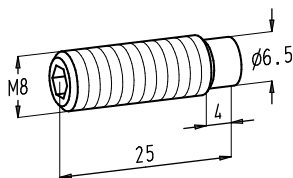
Order code	Pin length L	Vent groove
4600-232	25 mm	15/20 mm
4600-232C	30 mm	15/20 mm
4600-432	25 mm	14/18 mm
4600-432C	30 mm	14/18 mm

- Zinc alloy connection piece with stainless steel drive pin.
- The drive pins are also available separately: see next page.



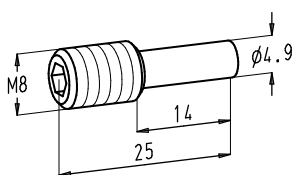
HANDLES AND CONNECTION PIECES

3.4. Drive pins for connection piece n° 4600-...

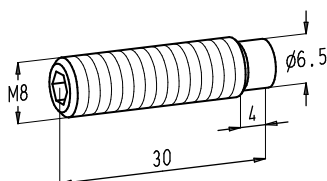


N° 4600-232.2

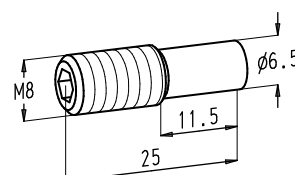
- The drive pins in stainless steel are suitable to use in combination with the connection pieces n° 4600-232.1 and n° 4600-432.1: see previous page.



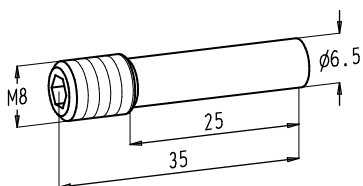
N° 4600-232B.2



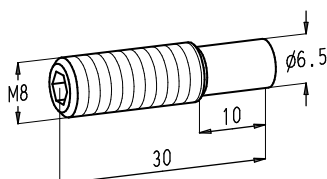
N° 4600-232C.2



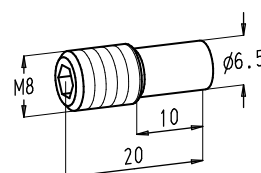
N° 4600-232.3



N° 4600-232.4

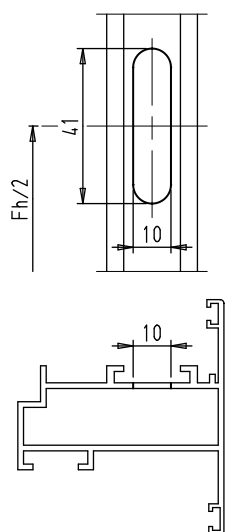


N° 4600-232.5

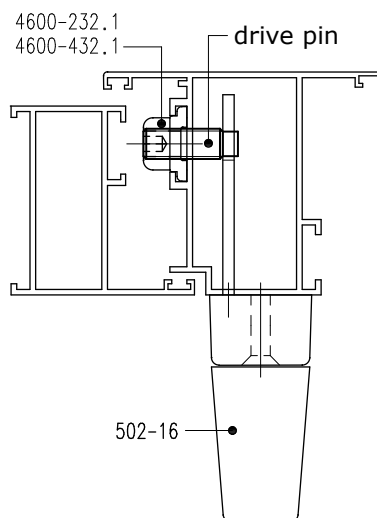


N° 4600-232.6

Milling



Installation example



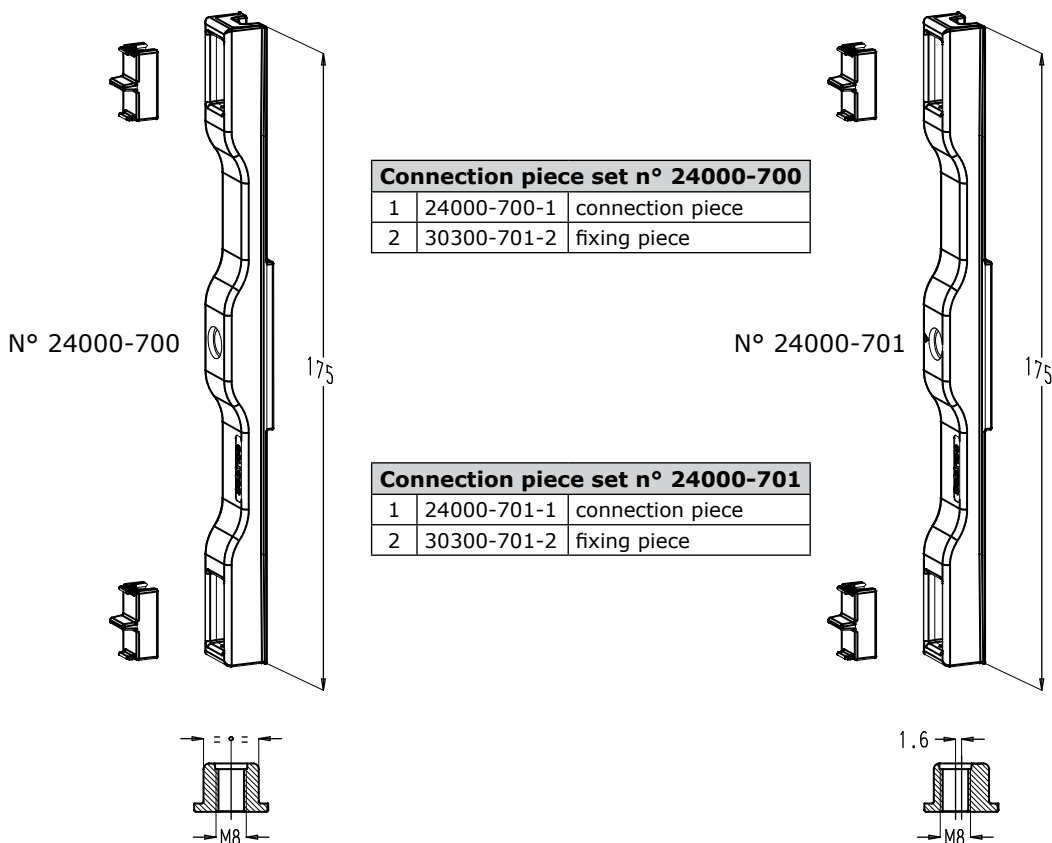




HANDLES AND CONNECTION PIECES

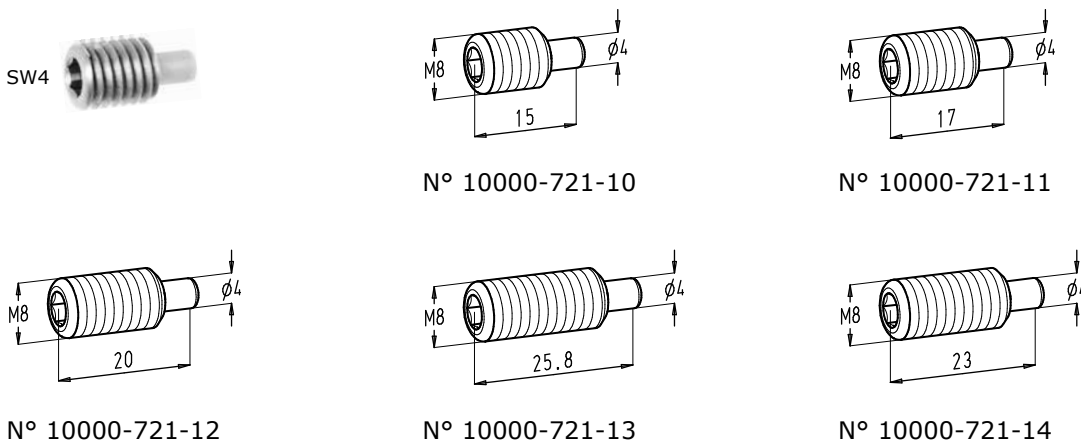
**3.5. Chrono connection pieces n° 24000-700 and 24000-701**

- Connection piece in which the drive pin n° 10000-721-.. is fixed.
- The drive pin is 1.6 mm out of centre when mounted on connection piece n° 24000-701.
- Finish:
  - connection piece: zinc alloy, black passivated
  - fixing pieces: black synthetic material.



**3.6. Drive pins n° 10000-721-..**

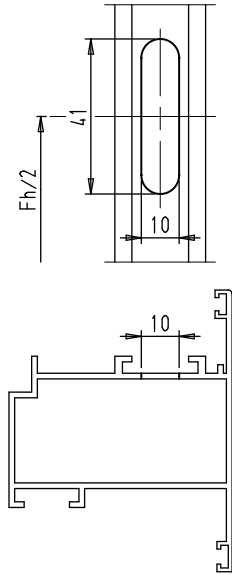
- The handle is connected to the perimeter locking system by means of a drive pin.
- The pin in stainless steel is available in different lengths and provided with an internal hexagon SW4.
- The pin is fully screwed in the connection piece up against its stop.





HANDLES AND CONNECTION PIECES

Milling



Installation example

