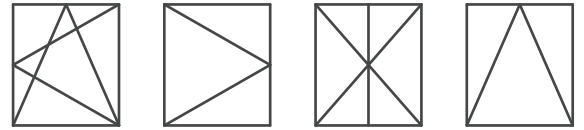


Cosmo







Adjustment and maintenance

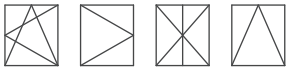


Contents

- 01. Adjustment**2
- Link arm2
- Bottom hinge4
- Top hinge for side hung window5
- Hinge for tilt window6
- Eccentric locking cam at top bolt7
- Eccentric locking cam at bottom bolt8
- Gasket pressure adjustment french casement keeps9
- Anti slam shut device11
- 02. Maintenance and lubrication**13
- General13
- Main leaf14
- Slave leaf15
- Top hinge / Link arm16
- Bottom hinge17

Legend

-  Position and reference side
-  Translation movement
-  Rotation movement
-  Correct
-  Not correct
-  Point of attention



COSMO ADJUSTMENT AND MAINTENANCE

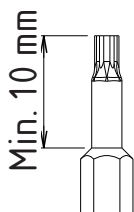
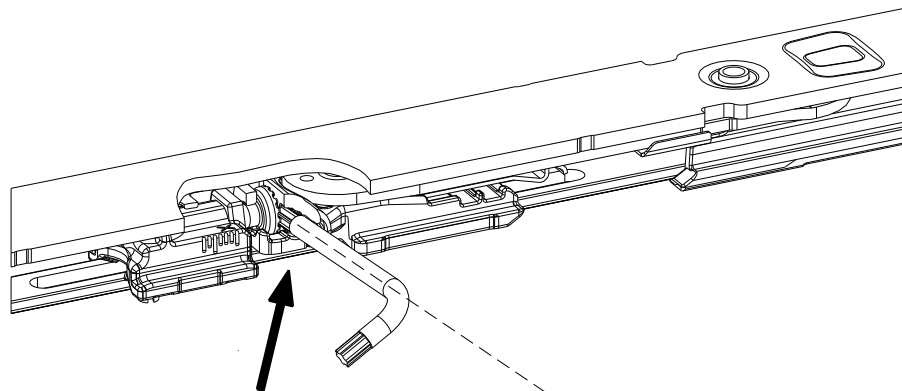
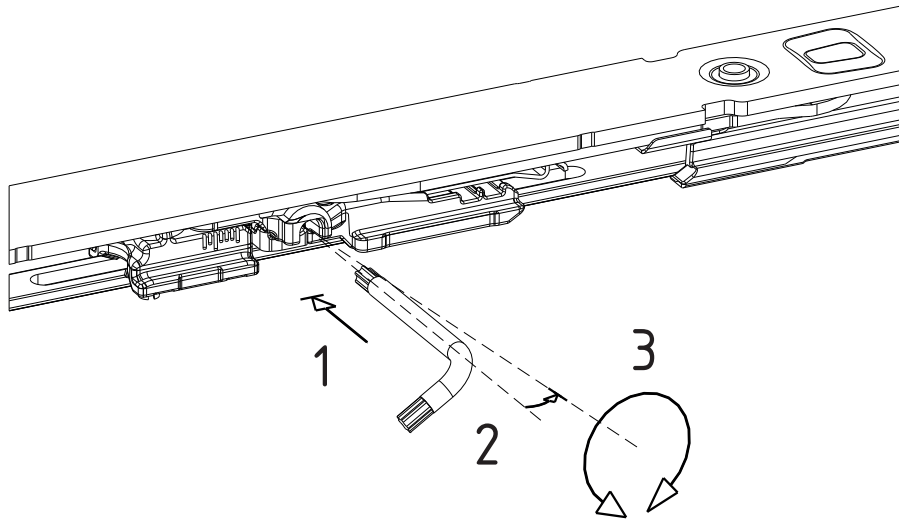
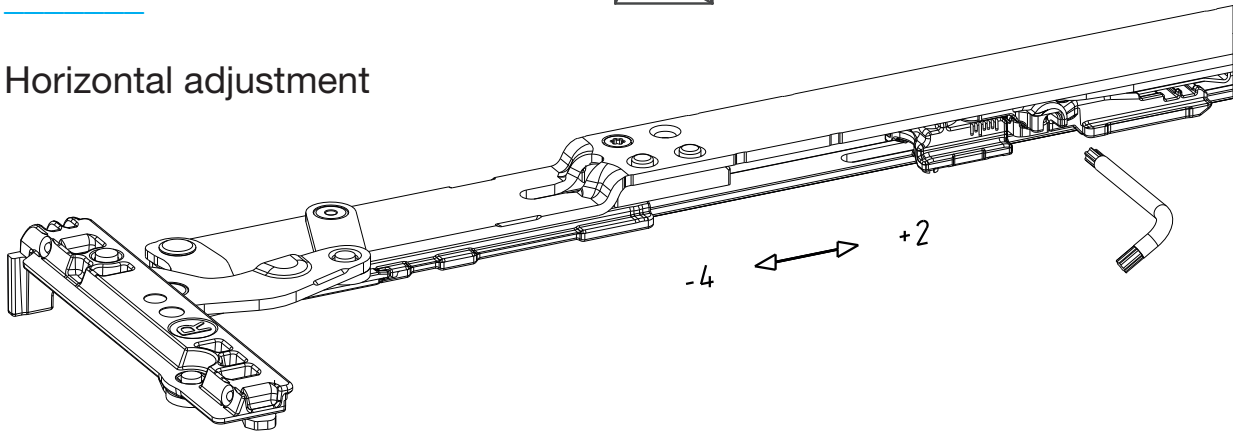
01. Adjustment > Link arm

01. Adjustment

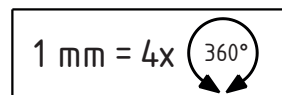
Link arm

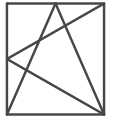
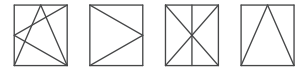


Horizontal adjustment

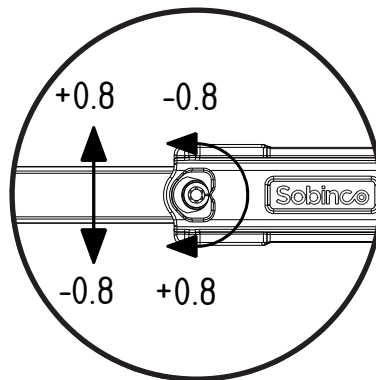
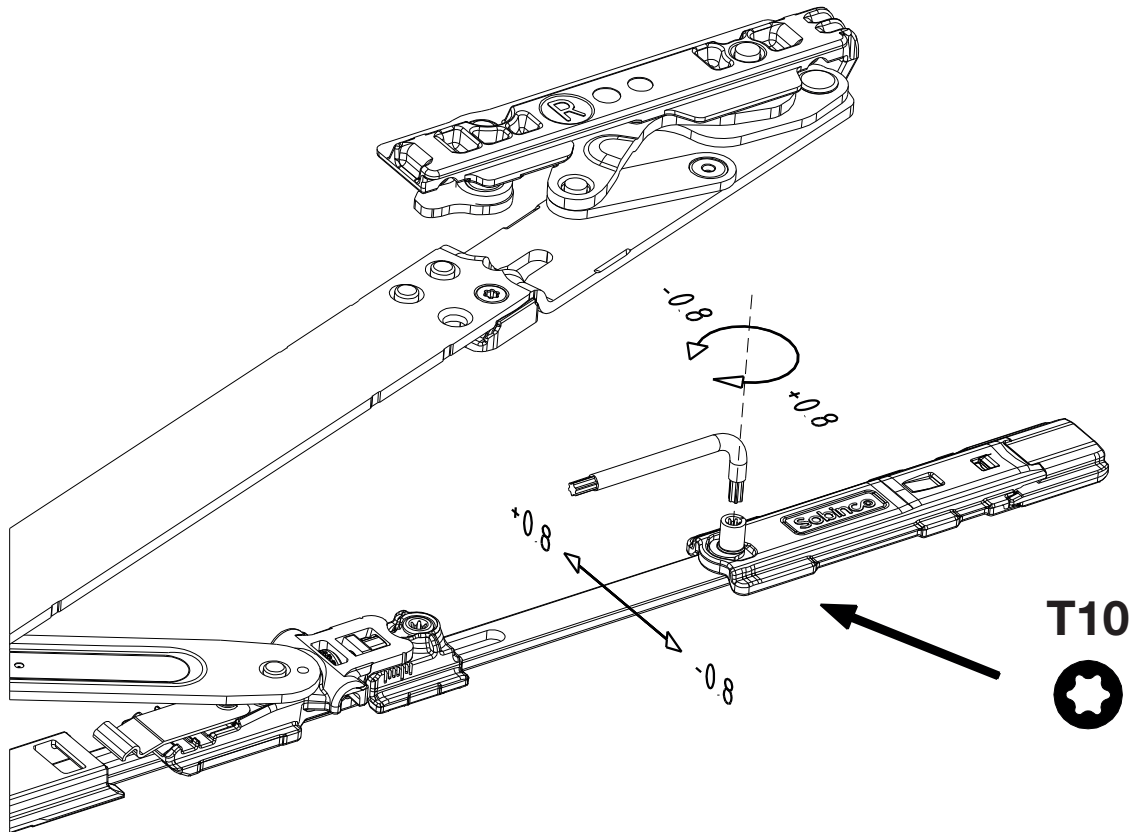


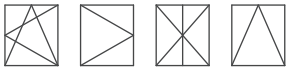
T15





Gasket pressure adjustment

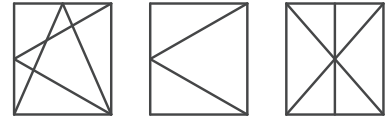




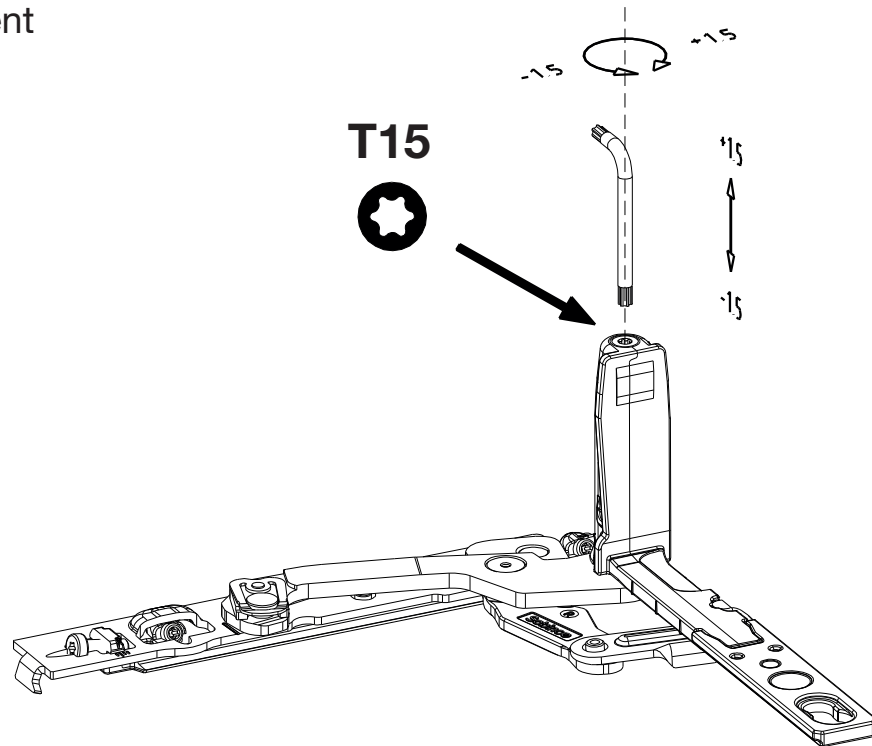
COSMO ADJUSTMENT AND MAINTENANCE

01. Adjustment > Bottom hinge

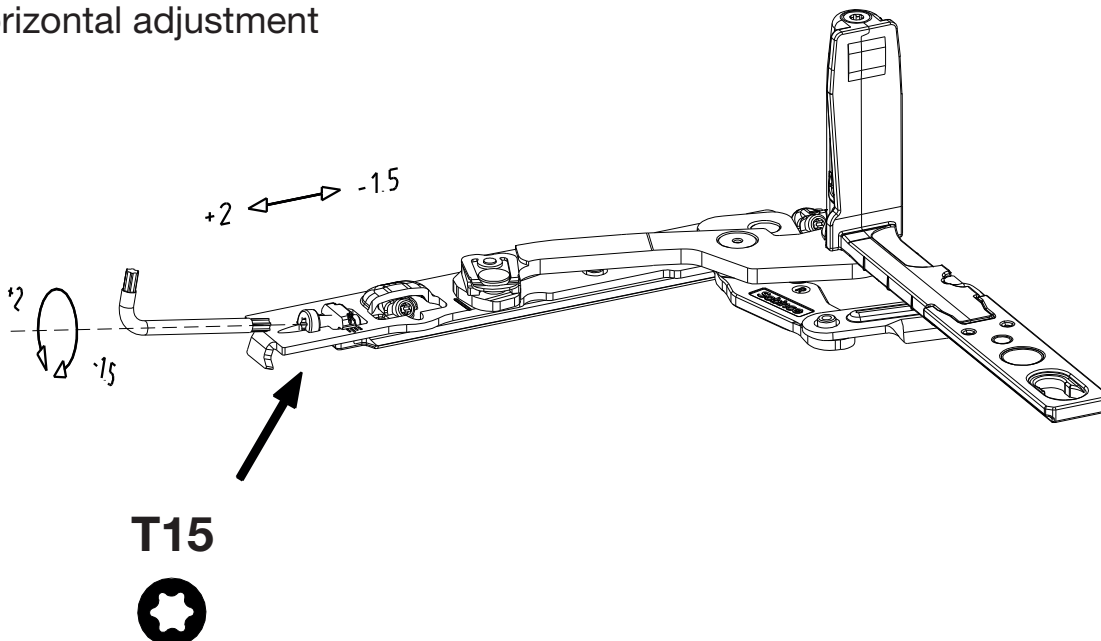
Bottom hinge

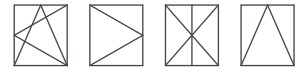


Vertical adjustment



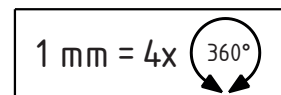
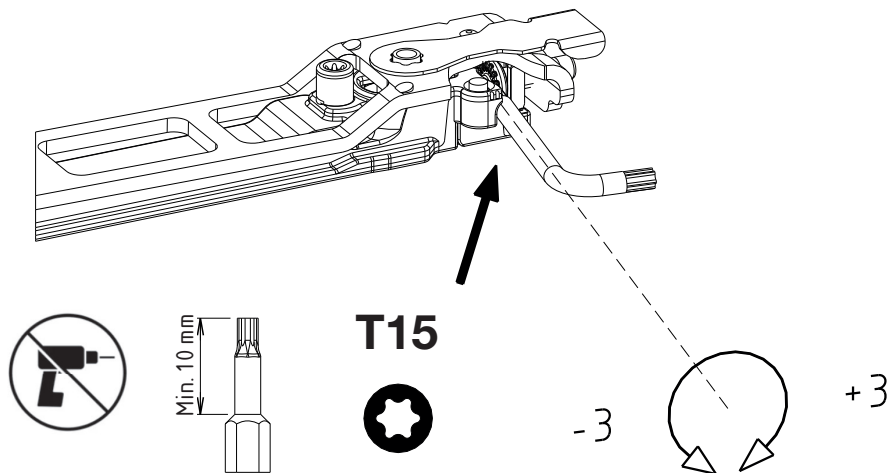
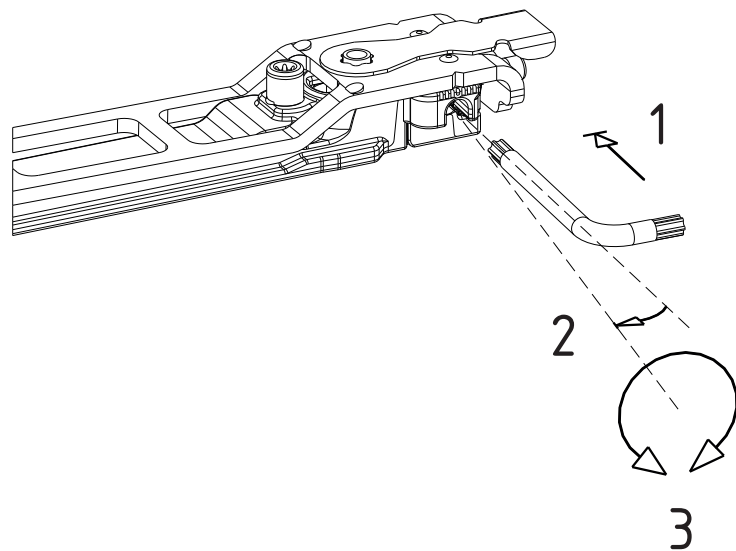
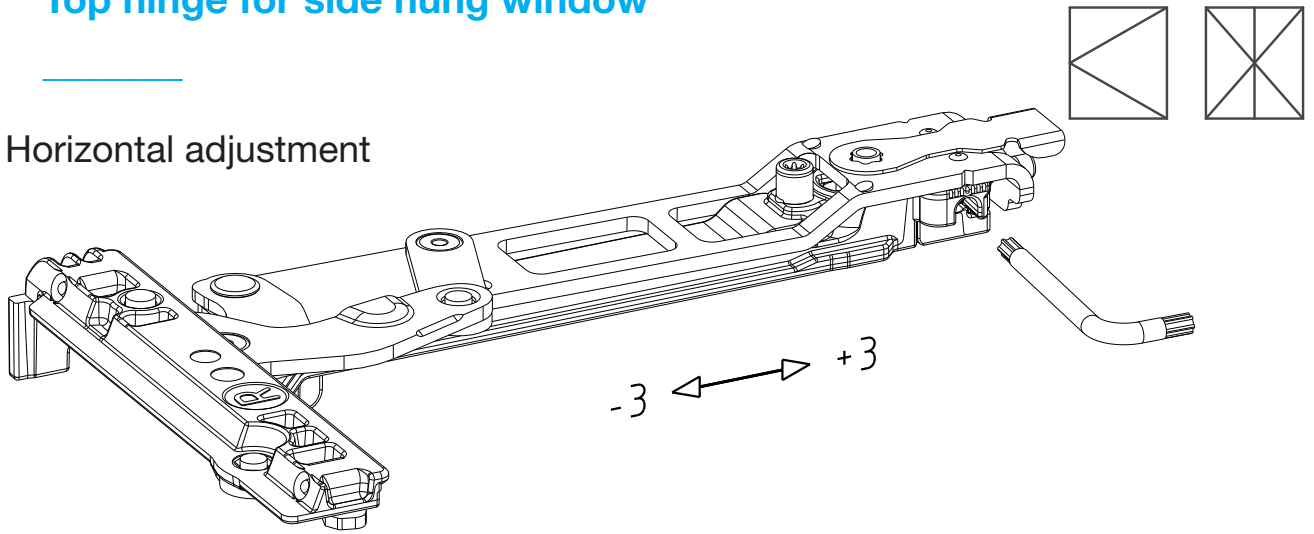
Horizontal adjustment

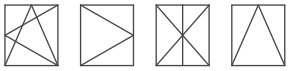




Top hinge for side hung window

Horizontal adjustment





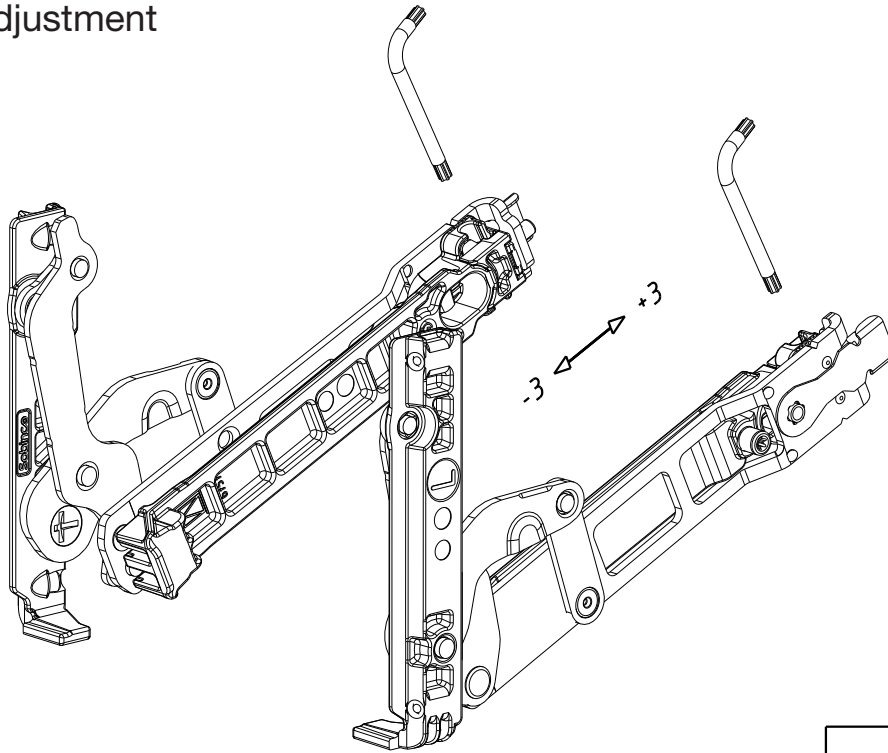
COSMO ADJUSTMENT AND MAINTENANCE


01. Adjustment > Hinge for tilt window

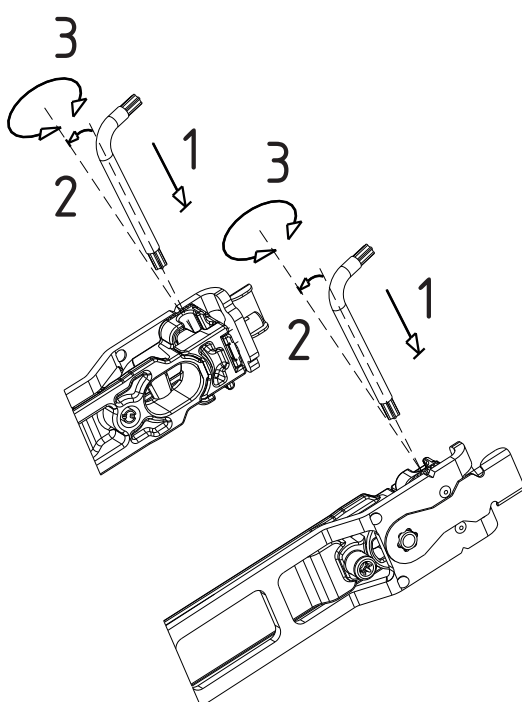
Hinge for tilt window



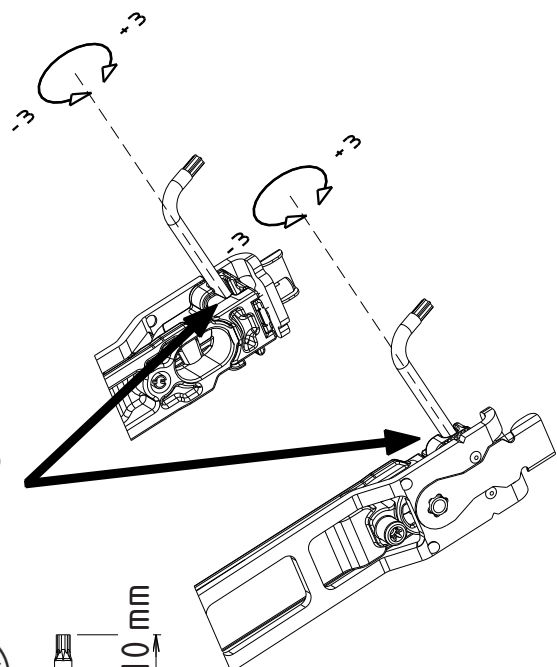
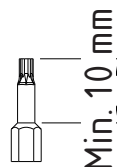
Vertical adjustment

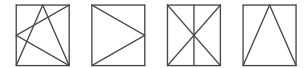


1 mm = 4x 

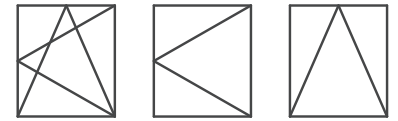


T15

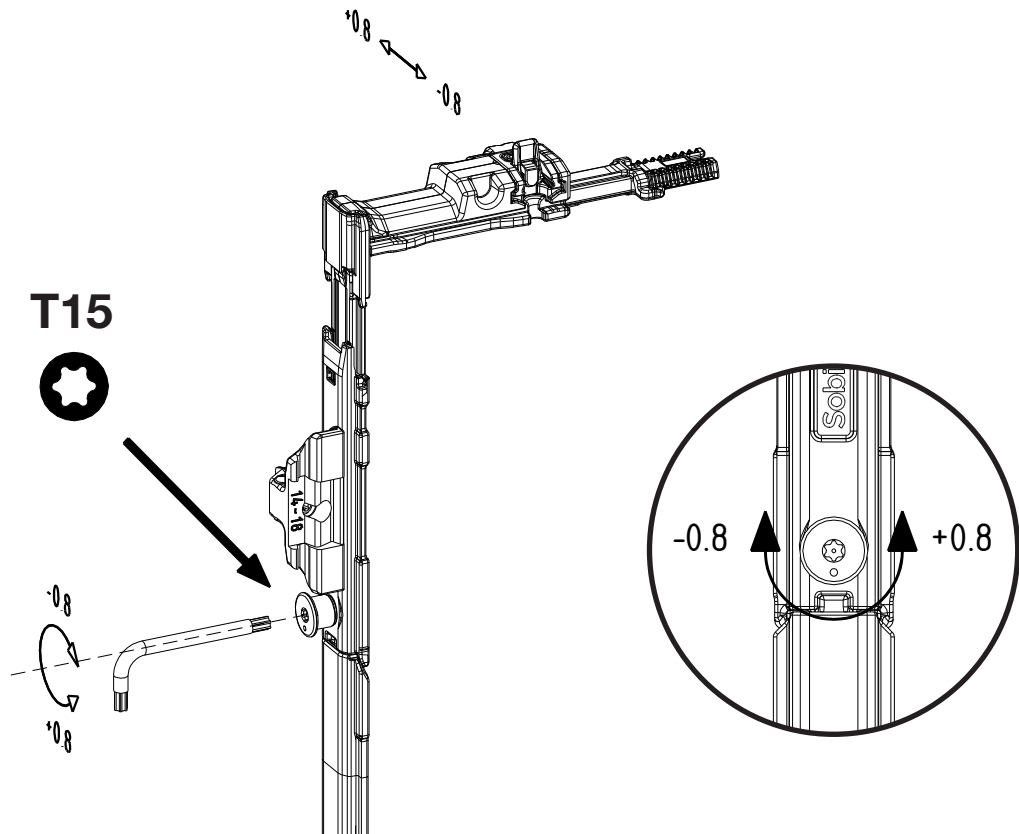




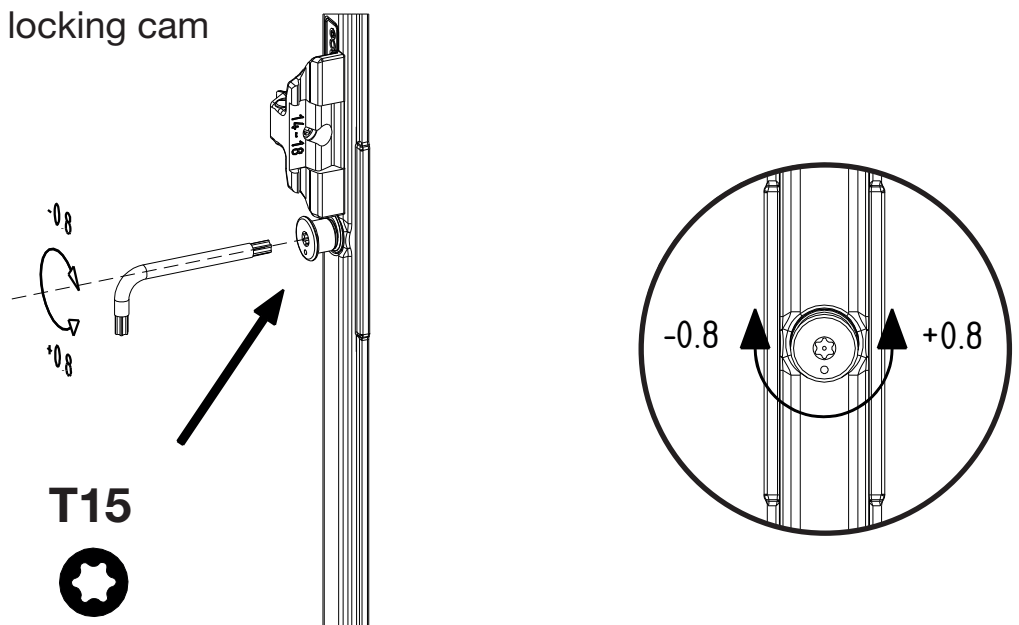
Eccentric locking cam at top bolt

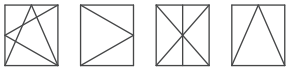


Top bolt



Optional locking cam

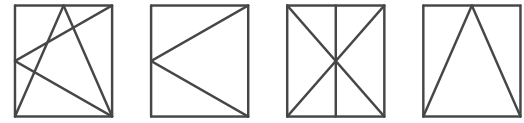




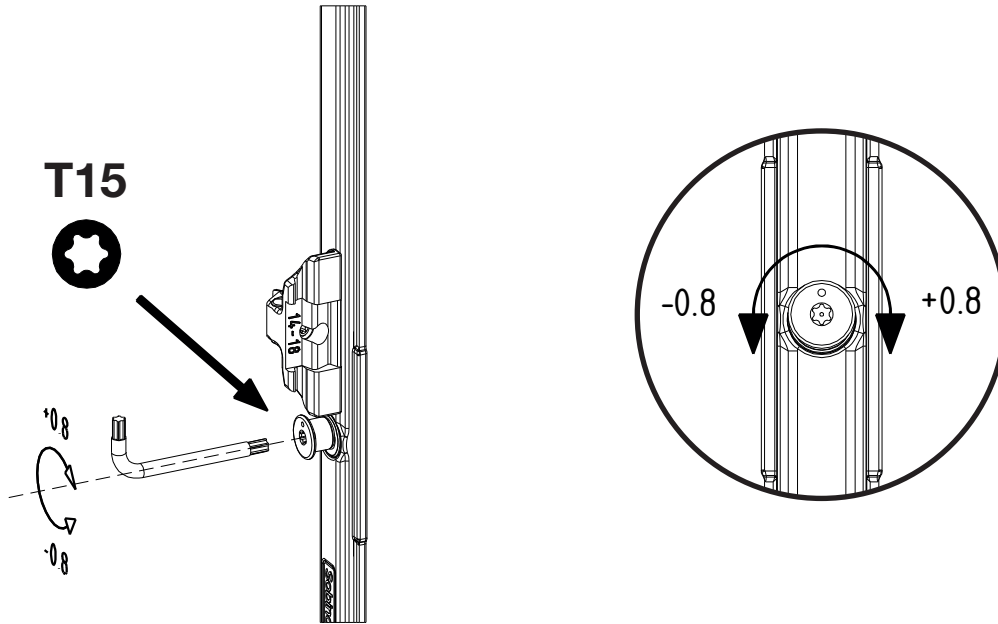
COSMO ADJUSTMENT AND MAINTENANCE

01. Adjustment > Eccentric locking cam at bolt

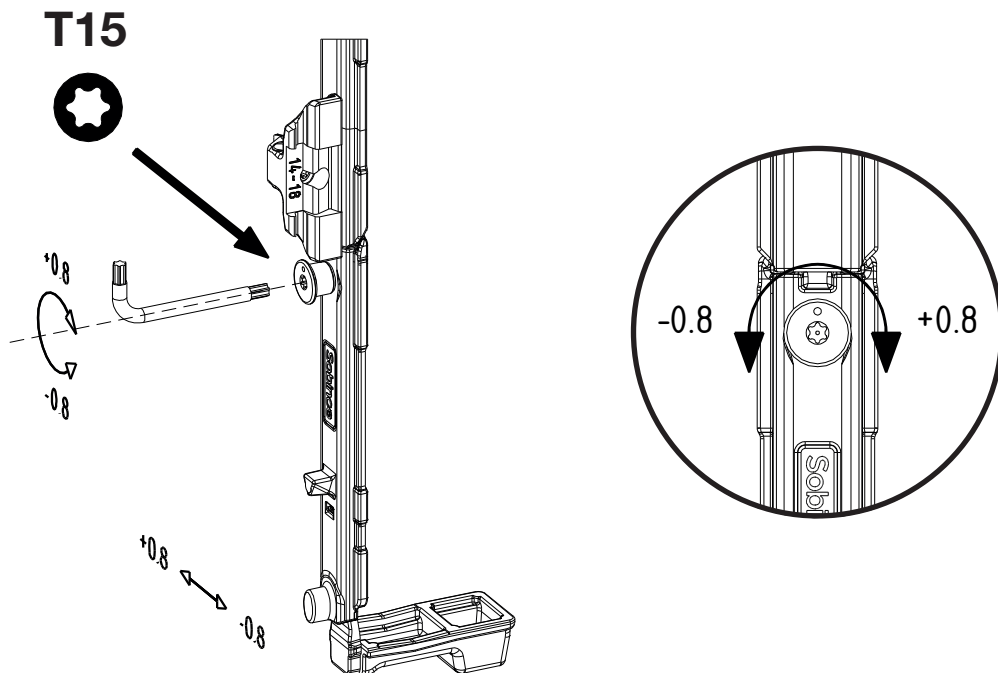
Eccentric locking cam at bottom bolt

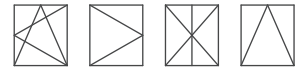


Optional locking cam

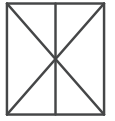


Bottom bolt

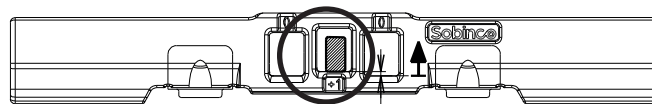
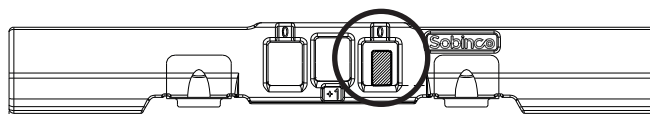
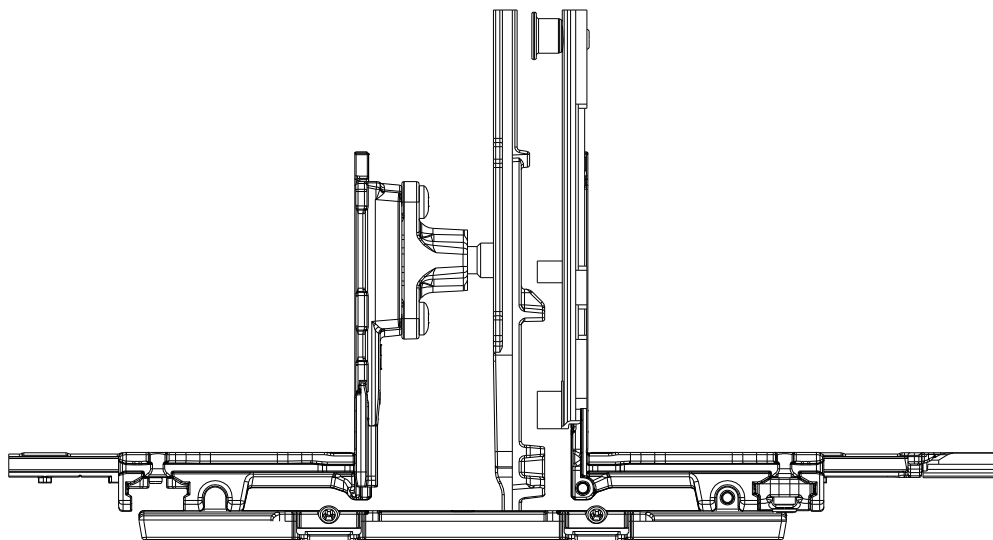
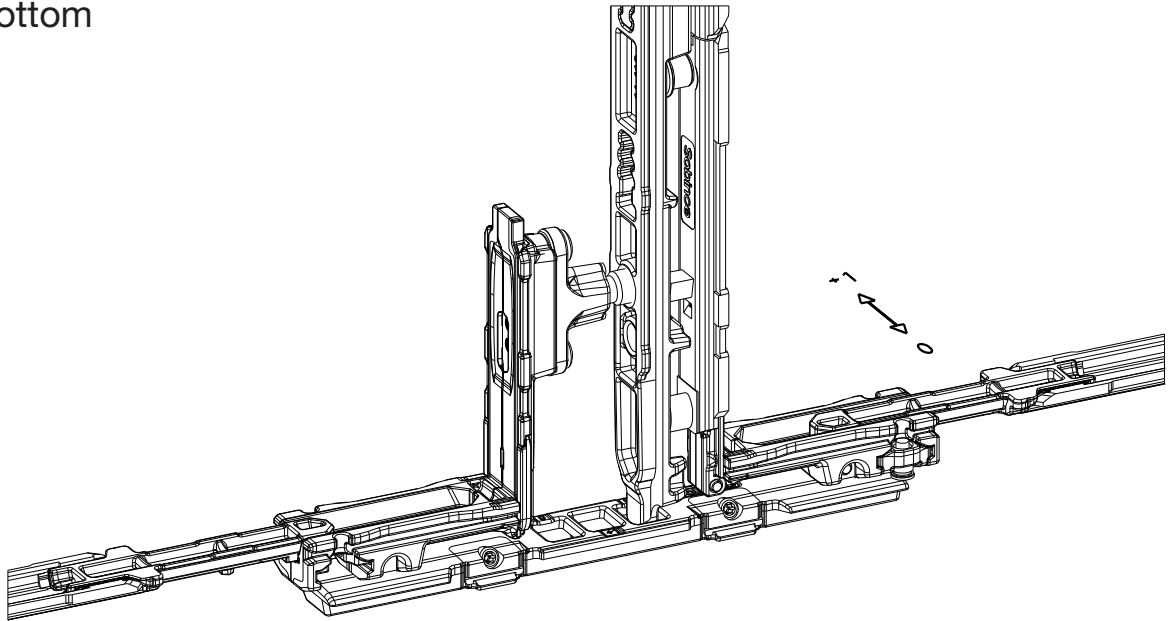




Gasket pressure adjustment french casement keeps

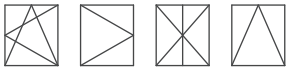


Bottom



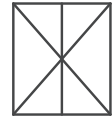
+11

+

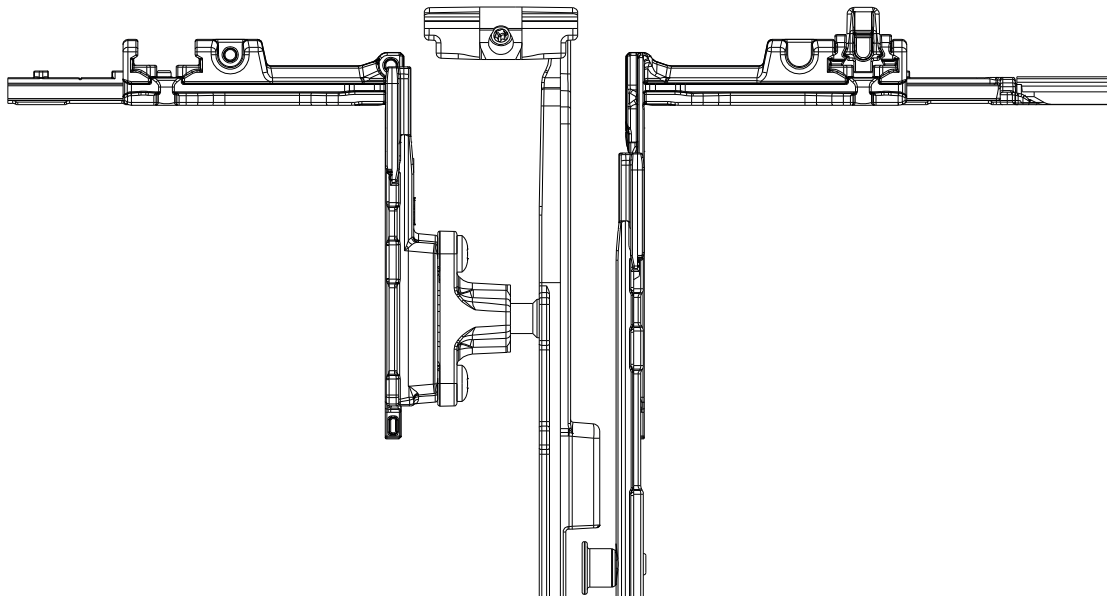
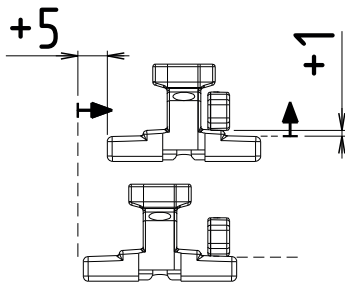
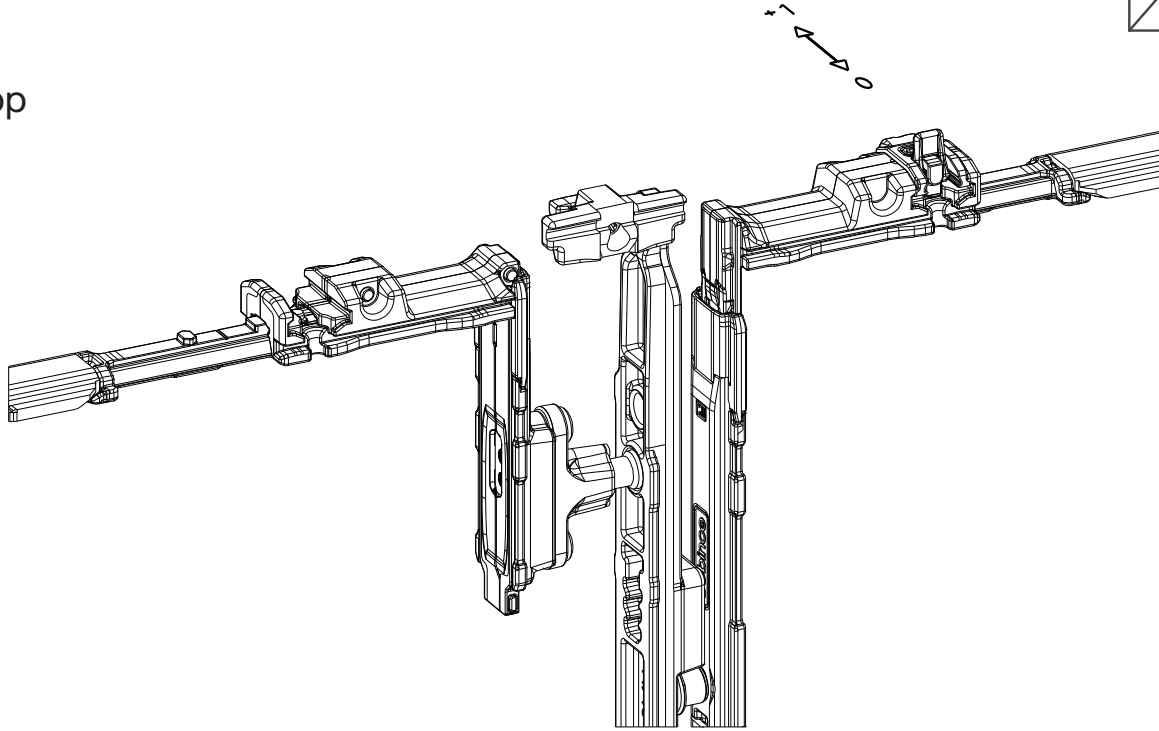


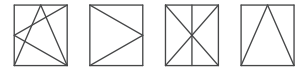
COSMO ADJUSTMENT AND MAINTENANCE

01. Adjustment > Gasket pressure adjustment
french casement keeps

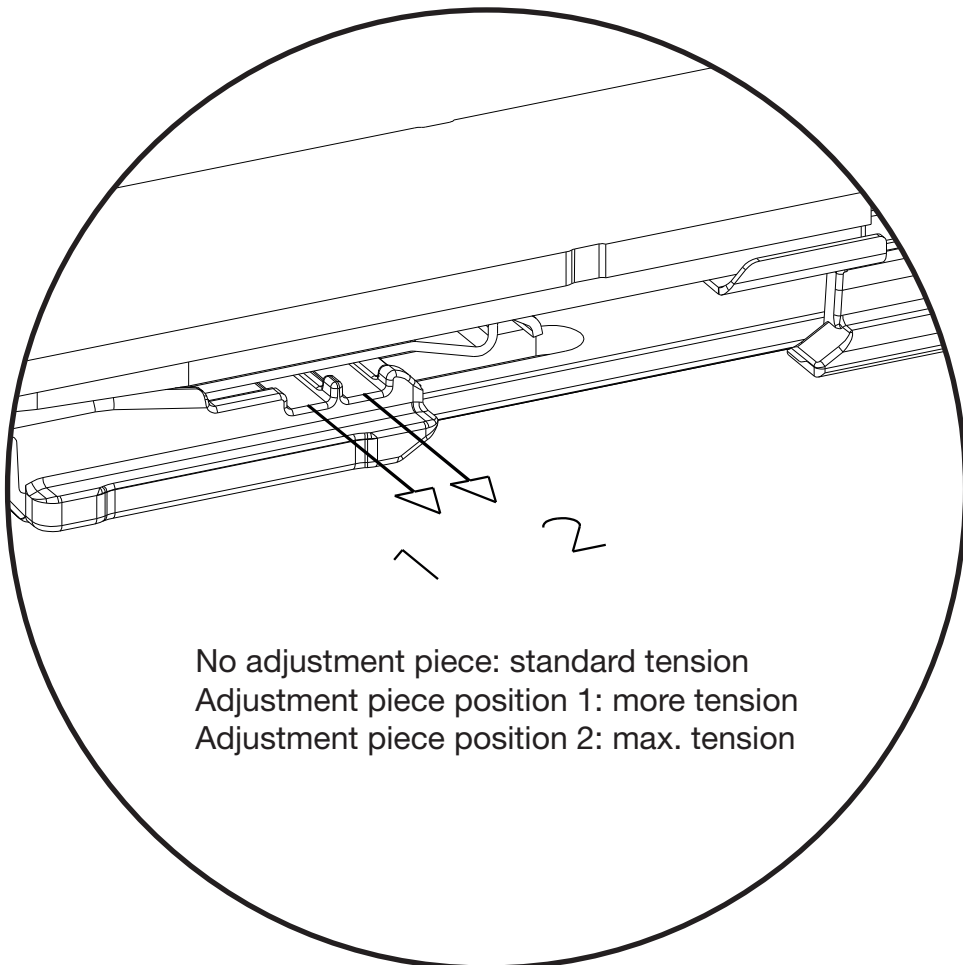
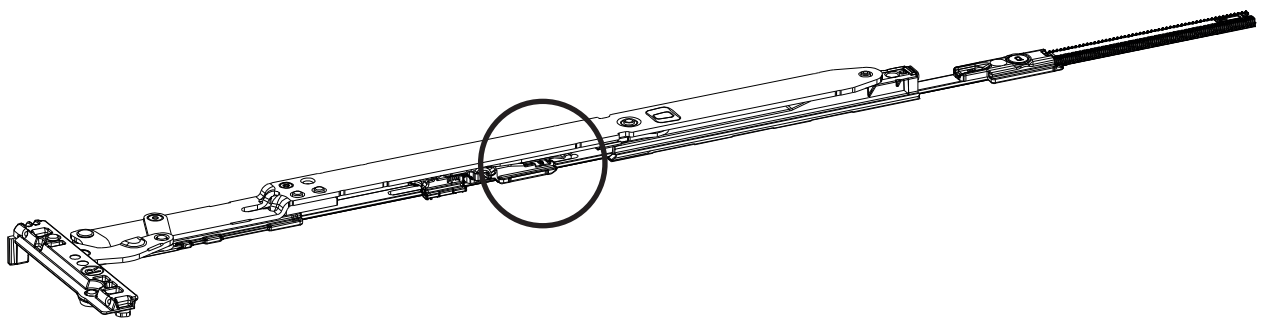
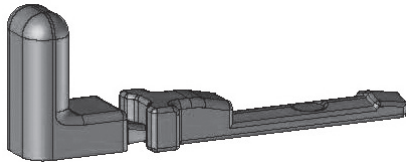


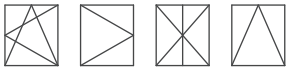
Top





Anti slam shut device

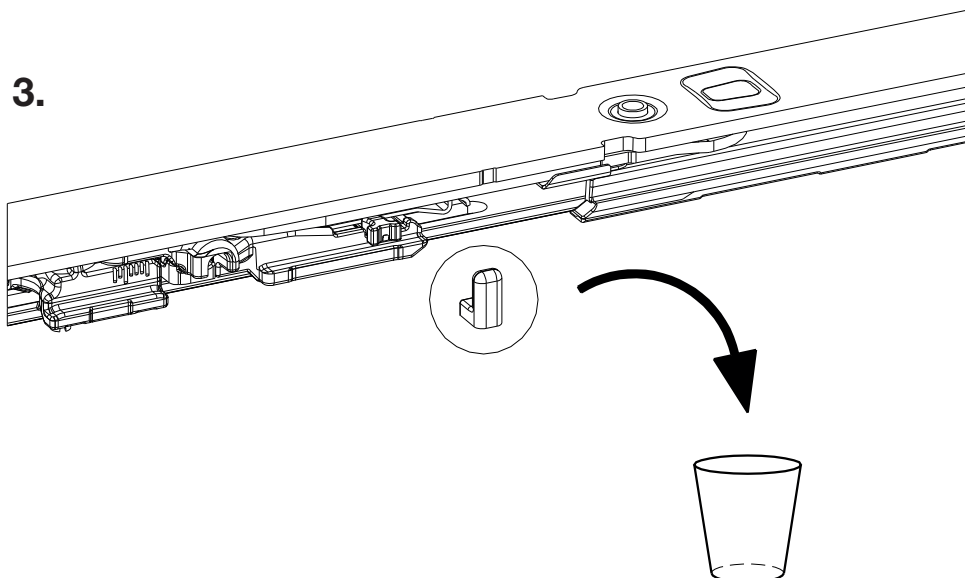
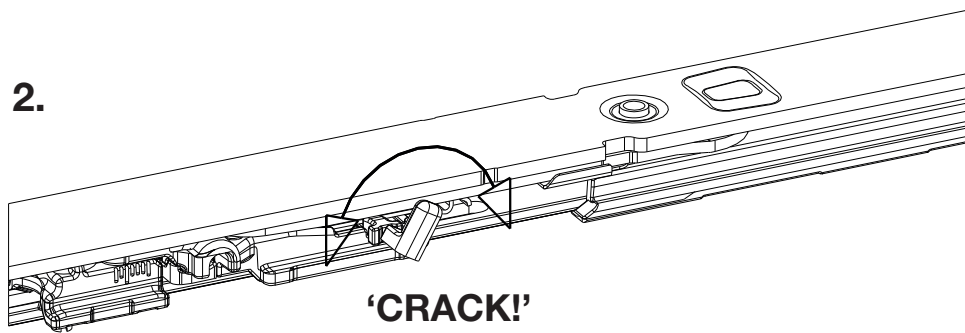
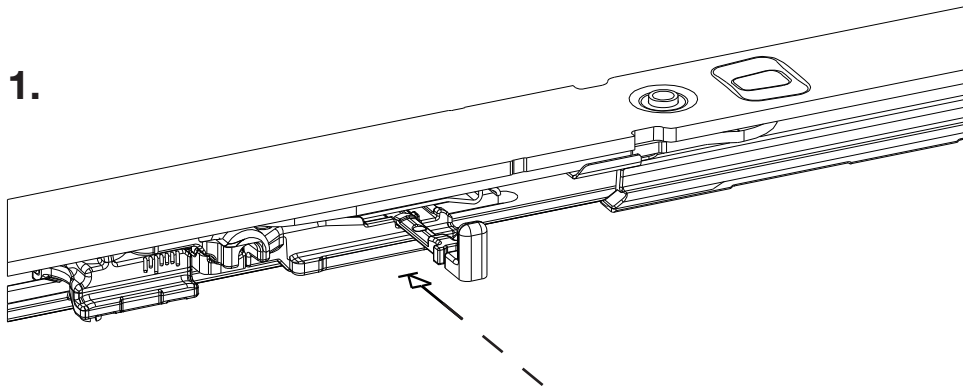


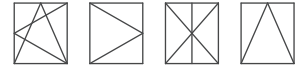


COSMO ADJUSTMENT AND MAINTENANCE

01. Adjustment > Anti slam shut device

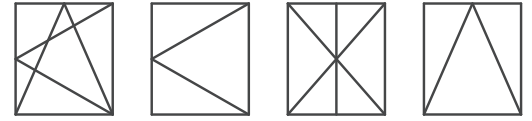
Illustrated: position 1





02. Maintenance and lubrication

General



1. Cleaning

- When necessary any dust and dirt must be removed from all components as this could affect the smooth operation of the system.
- The system must not be cleaned with water and/or other cleaning products as this could affect the lubricants and the corrosion resistance of the gear.

2. Adjustments

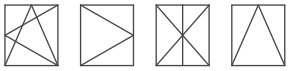
- All gear adjustments, especially of the hinges and the link arm, the replacement of parts and installation and removing of the vents should be carried out by a window expert.

3. Lubrication

- The corner transmission, the lockcase and the hinges are greased during manufacture and therefore no additional lubrication is necessary.
- When operating the window the first time, it is required to lubricate the locking points with grease.
- If the window weighs more than 130 kg, the hinges must be lubricated annually.
- Hinges for tilt windows and turn windows are lubricated in a similar way.

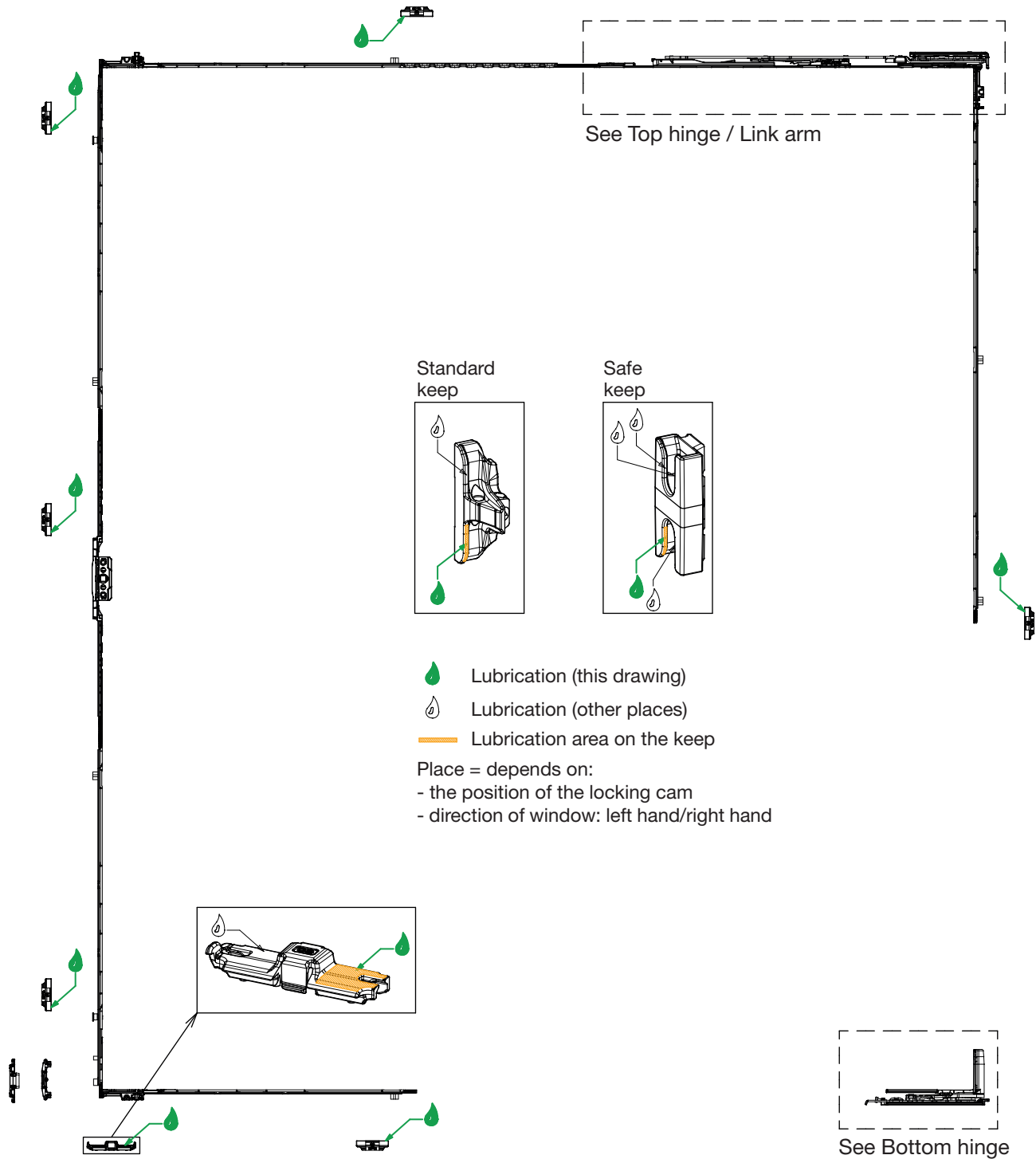
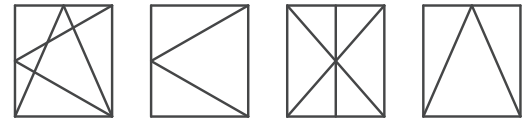
4. Checking

- Check tightness of link arm, handle, hinges and keep screws.

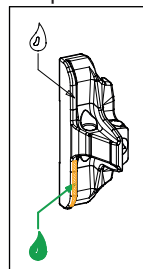


COSMO ADJUSTMENT AND MAINTENANCE

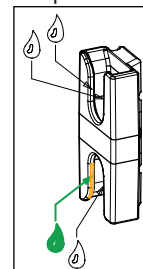
Main leaf






Standard keep

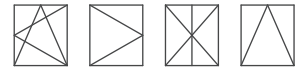


Safe keep

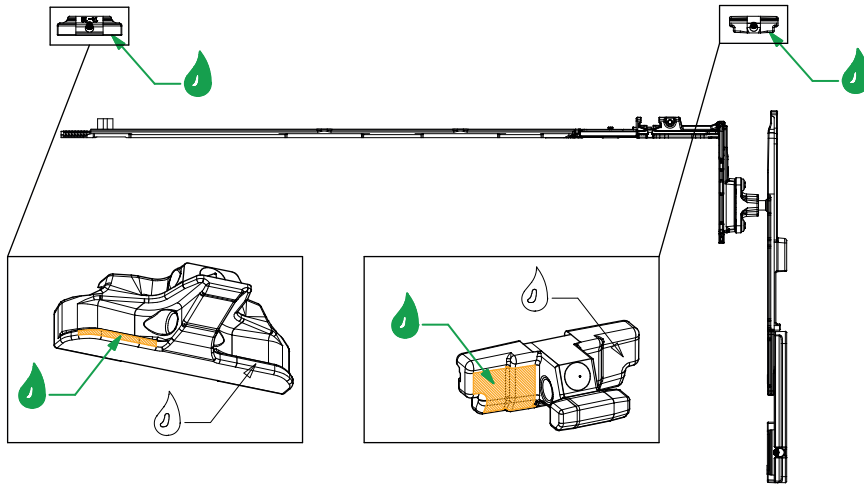
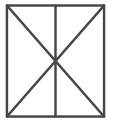


-  Lubrication (this drawing)
-  Lubrication (other places)
-  Lubrication area on the keep


Place = depends on:
- the position of the locking cam
- direction of window: left hand/right hand



Slave leaf

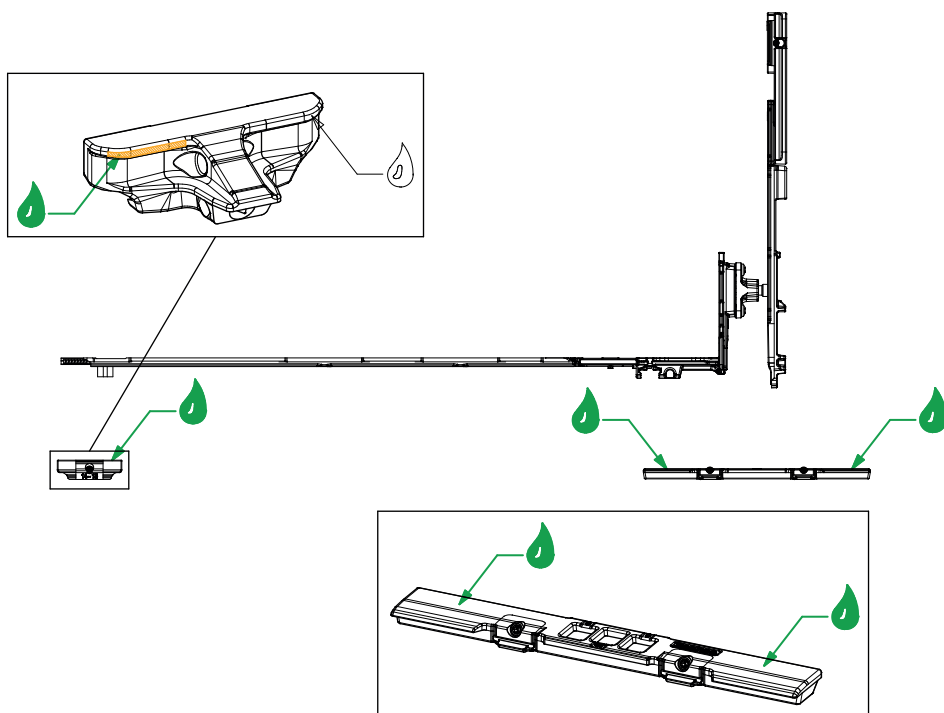


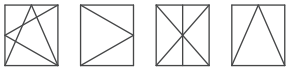
 Lubrication (this drawing)

 Lubrication (other places)

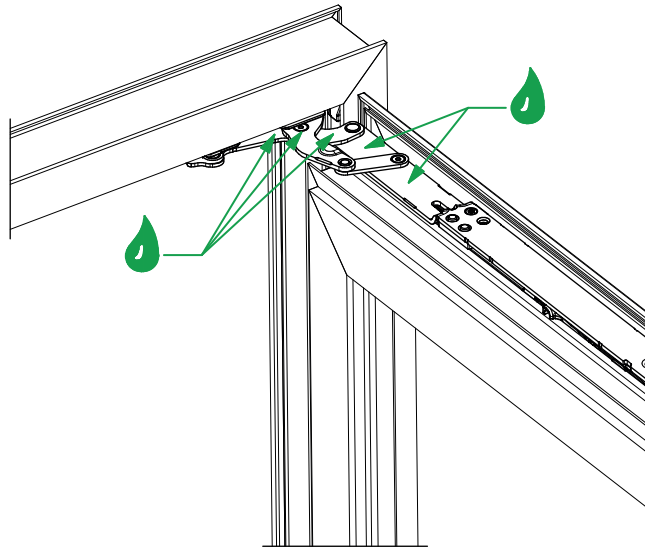
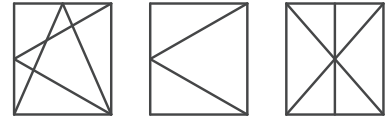
 Lubrication area on the keep


Place = depends on direction of window (left hand or right hand)

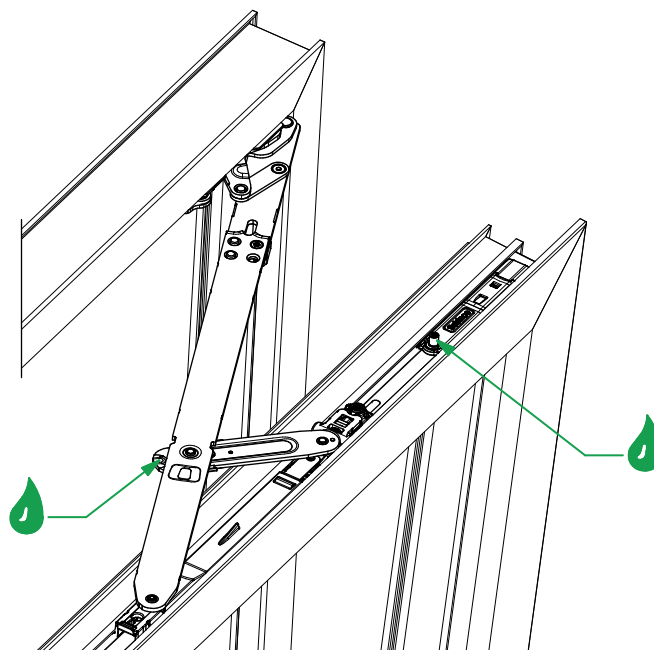


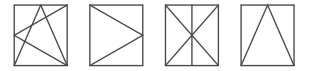


Top hinge / Link arm

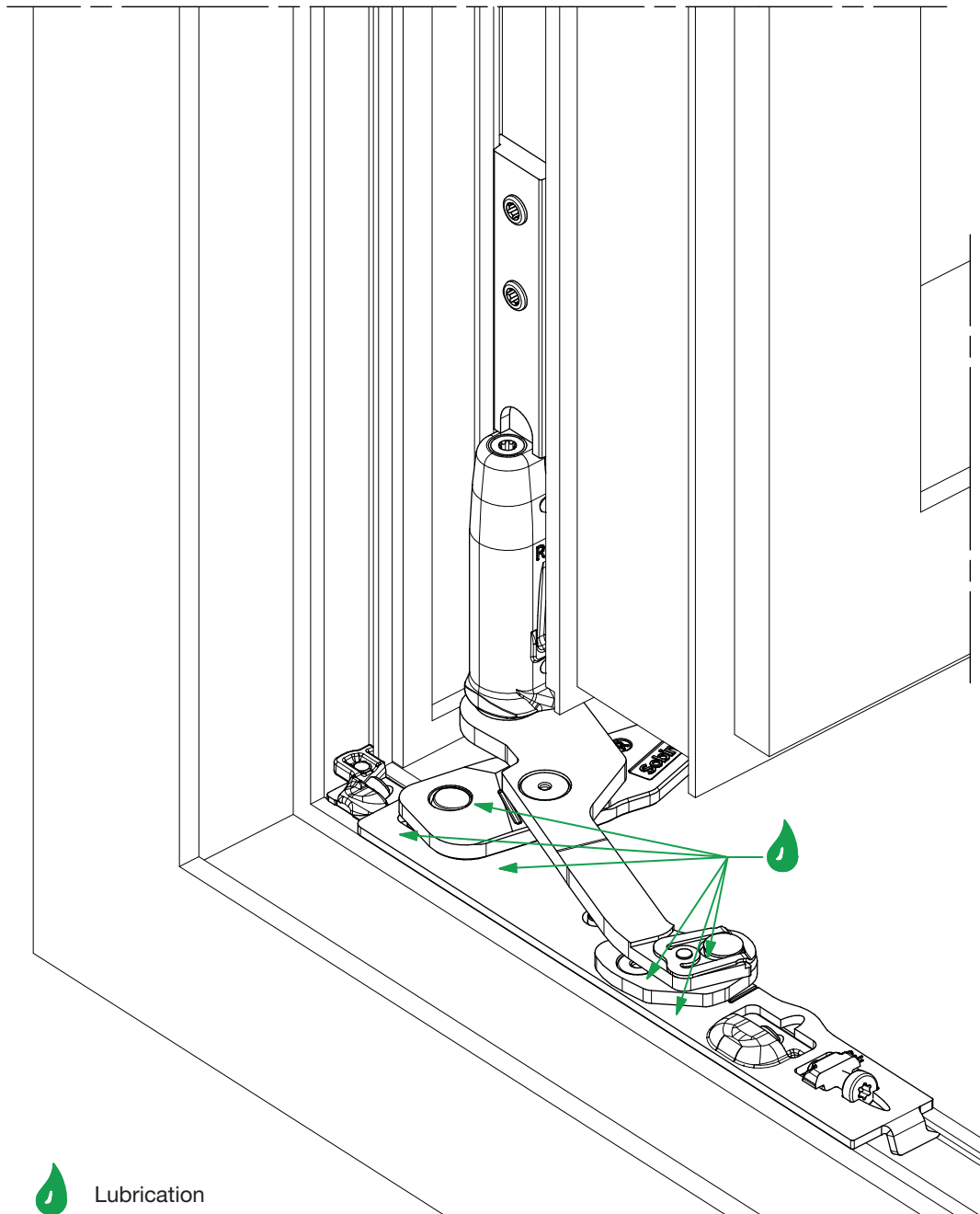
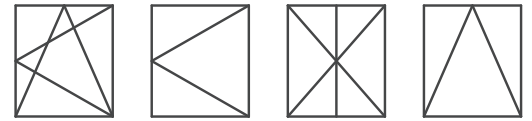



 Lubrication





Bottom hinge



 Lubrication

