

---

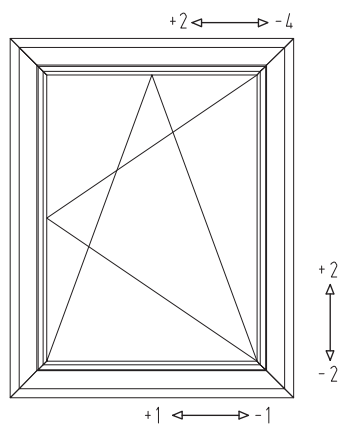
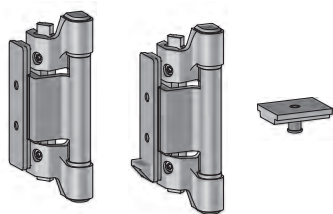
# Chrono

Visible hardware

---



**Sobinco**  
OPENS YOUR LIFE



## GENERAL CHARACTERISTICS

- Chrono visible hardware for **aluminium windows**.
- Chrono hardware is available in **Standard, Plus and Safe RC3/4** versions.
- Chrono is available to suit a frame groove of **14/18 mm** and **10/14 mm**.
- Manufactured from **high quality non-corroding materials**.
- **Quick assembly:** Euro groove clamping.
- **Easy adjustment.**
- High load bearing **capacity:**
  - vent weights **up to 130 kg** (standard Chrono hinges): RAL certified.
  - vent weights **up to 300 kg** (Chrono hinges for side hung windows).
- Chrono Safe is certified by the SKG-institute with **2 SKG stars**.

## VISIBLE HINGES FOR TURN WINDOWS UP TO 300 KG

- Special hinges for side hung windows, that can carry vent weights up to **300 kg**, can be used for certain projects.
- The **quantity of hinges** that needs to be used depends on following factors:
  - the vent weight
  - the vent height
  - the vent width
  - In addition, buffered window stays are designed for windows with vent weights **higher than 170 kg**.

## ADJUSTMENTS

- **Bottom hinge:**
  - Continuous horizontal adjustment range of  $\pm 1$  mm.
  - Continuous vertical adjustment range of  $\pm 2$  mm.
  - Adjustable without removing the vent.
- **Top hinge and link arm:**
  - Continuous horizontal adjustment range of  $+2$  mm/ $-4$  mm.
  - Gasket pressure adjustment of  $\pm 0.8$  mm.

## BENEFITS OF LOCKCASES

- **Quick installation** by clamping the lockcase in the profile.
- **Security against burglary:** the lockcase is positioned at the outside behind the tooth of the groove. In combination with an extra thickness plate, the lockcase is certified with 2 SKG stars.
- **Small minimum height.**

## OPERATION

- Horizon window handles with square spindle.
- Edge window handles with square spindle.

