

---

# Horizon

Handles for windows, doors and sliding doors

---



**Sobinco**  
OPENS YOUR LIFE

---

Elegance  
is the balance  
between proportion,  
emotion and  
surprise.

---





# HORIZON

## DESIGN

Sobinco has developed a range of handles and finger pulls in which the **unique design of the Horizon handle** can be used for any type of element. The handles and finger pulls for windows, doors and sliding doors ensure a uniform look, suitable for **modern-day architecture**.

## FINISHES

The Sobinco handles and finger pulls are manufactured from carefully selected, **high-quality materials**.

All handles can be **polyester powder coated** in more than 450 RAL colours. Most handles can be **anodised** in various shades.

All handles for doors, sliding doors and lift-slide doors are available without a cylinder opening.

Various fixing holes are possible depending on the choice of lock. **More information can be found in our catalogue**.

## ERGONOMICS

The finger pulls have a wide and deep cut-out which ensures **ergonomic** operation. The new finger pull is not only available for the cylinder-operated BT-Lock, but there are also varieties for our other types of sliding window locks, such as the handle-operated Penta-Lock, lift-slide locks and hook locks.

## USER-FRIENDLINESS

Thanks to the **integrated spring system**, the Horizon door handle always returns to its original starting position, also after intensive use.

The Horizon door handle with integral click system can be rotated through 360° in four stages of 90° each.

With the exception of the fixed door handles and door pulls, the Horizon door handles can be used on both the left and the right.

## BURGLARY RESISTANCE

The **Horizon Security** door handles and finger pulls are burglar-resistant. The handles come with a long backplate in solid aluminium, as a result of which the cylinder is practically inaccessible and the long backplate is almost impossible to remove.

The SKG Institute has awarded **two stars** to the Horizon Security outside handles. These handles are fitted with invisible fixing holes.



The SKG Institute has awarded **three stars** to the Horizon Security outside handles with cylinder protection.



The SKG Institute has awarded **three stars** to the lockable handles 30000-670CYL



The SKG Institute has awarded **three stars** to the Horizon Security finger pulls.



## BELGIAN TOP QUALITY

Sobinco has an extremely large **test department** where tests are carried out continuously, such as cyclical and strength tests. Likewise, break-in tests, corrosion-resistance tests, and air, wind and water tests are also performed internally, in compliance with the most recent European or country-specific directives and quality standards.

## STANDARDS

The Horizon **window handles** meet the European standard EN13126-3:2012 with the following classification:

• **Standard window handles with fork:**

1	5/180	-	0	1	4	0	3/C2	-
---	-------	---	---	---	---	---	------	---

• **Window handles with cylinder and fork:**

1	5/180	-	0	1	4	2/2	3/C2	-
---	-------	---	---	---	---	-----	------	---

The Horizon **door handles** meet the European standard EN1906:2012 with the following classification:

• **Standard door handles:**

4	7	-	0	0	5	0	A
---	---	---	---	---	---	---	---

• **Security door handles:**

4	7	-	0	0	5	1	A
---	---	---	---	---	---	---	---

• **Finger pulls:**

4	-	-	0	0	5	0	-
---	---	---	---	---	---	---	---

• **Security finger pulls:**

4	-	-	0	0	5	1	-
---	---	---	---	---	---	---	---

De Horizon **anti-panic handles** meet the European standard EN179 with the following classification:

3	7	6	0	1	4	5	2	A	B
---	---	---	---	---	---	---	---	---	---

The Horizon handles achieve a **high corrosion-resistant class 5** (480u - EN1670).





# Overview handles

## WINDOWS



30000-670



30000-671



30000-670CYL



31000-670CYL

## DOORS



82000(B)(C)(L) (VI)



82010(B)(C)L VI



82002(C)(L) (VI)



82005(C)(L) (VI)



82006(C)(L) (VI)



82008(C)(L) (VI)



82020-50(C)L (VI)

F1001039  
F1001031  
F1001032  
F1001033  
F1001034

## LIFT-SLIDE/SLIDING DOORS



82000(C)L (VI)



82002(C)L (VI)



82140(C)L (VI)  
82140(B)(S)(P)L VI



82142(C)L (VI)  
82142S(P)L VI



82006CL (VI)  
82146CL (VI)



82148CL (VI)

## FINGER PULLS



82191L VI



82180(C)L (VI)  
82181(C)L (VI)



82182(C)L (VI)



82090L VI  
82091(C)L VI



82092CL VI

\* = Left and right execution available  
 (only for tilt-turn windows)  
 C = Without cylinder opening  
 L = Long backplate  
 VI = Blind fixing holes (exterior)  
 A = The distance from the handle opening to the uppermost  
 fixing hole.

B = With lower depth  
 P = With cylinder protection  
 S = With coated backplate in stainless steel  
 H = Raised handle or raised backplate  
 ° = Profile dependent  
 .. = Spindle length = 0, 25, 38, 65 of 90 mm



F35000-680-..    F35300-680-..CYL    30000-680-..    30000-680B-..    30000-662    30000-662CYL  
 F36000-680-..CYL



82100(B)(C)L (VI)    82102(C)L (VI)    82105(C)L (VI)    82106(C)L (VI)    82108(C)L (VI)    82390-12-50  
 82100(B)S(P)L VI    82102S(P)L VI    82105S(P)L VI    82106S(P)L VI    82108S(P)L VI    82392-13-50  
 82100(B)HPL VI    82102HPL VI    82105HPL VI    82106HPL VI    82108HPL VI    82392-14-50  
 82110(B)(C)L (VI)    82112(C)L (VI)    82115(C)L (VI)    82116(C)L (VI)    82118(C)L (VI)    82392-15-50  
 82110(B)S(P)L VI    82112S(P)L VI    82115S(P)L VI    82116S(P)L VI    82118S(P)L VI  
 82110(B)HPL VI    82112HPL VI    82115HPL VI    82116HPL VI    82118HPL VI



74030(C) (VI)    74030B(C) (VI)    74130(B)(P) VI



82190L VI    74004-3    74004-4

# Windows



## BASELESS HANDLES

30000-670



30000-671



30000-670CYL



31000-670CYL\*



F35000-680-..



F35300-680-..CYL



F36000-680-..CYL



\* = Left and right execution available (only for tilt-turn windows)  
B = With lower depth  
.. = Spindle length = 0, 25, 38, 65 of 90 mm  
- = Free run

■ Available anodised  
■ Available powder coated in more than 450 RAL colours

### HANDLES WITH BASE

**30000-680-..**

■ ■



**30000-680B-..**

■ ■



### HANDLES WITH FORK

**30000-662**

■



**30000-662CYL**

■



# Doors

---



## DOOR HANDLES

**82000(B)(C)L**

**82000(B)(C)L VI** (A = 21,5 MM)

**82010(B)(C)L VI** (A = 46 MM)



**82002(C)L**

**82002(C)L VI** (A = 21,5 MM)

**82012(C)L VI** (A = 46 MM)



**80200-50(C)L (VI)**

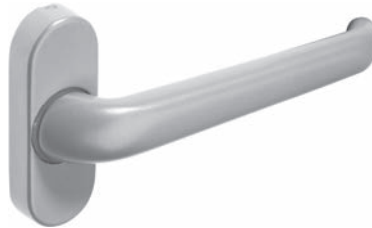
**82500(C)L (VI)**



**82000(B) (VI)**



**82002 (VI)**



\* = Left and right execution available  
 \*\* = Without backplate  
 C = Without cylinder opening  
 L = Long backplate  
 VI = Blind fixing holes (exterior)  
 A = The distance from the handle opening to the uppermost fixing hole.  
 ° = Profile dependent

B = With lower depth  
 ~ = Anti-panic  
 ■ = Available anodised  
 ■ = Available powder coated in more than 450 RAL colours

**82005(C)L\***  
**82005\*\***  
**82005(C)L VI (A = 21,5 MM)\***  
**82015(C)L VI (A = 46 MM)\***



**82006(C)L\***  
**82006 (VI)**  
**82006(C)L VI (A = 21,5 MM)\***  
**82016(C)L VI (A = 46 MM)\***



**82008(C)**  
**82008(C)L (VI)**  
**82018(C)L VI**



**F1001039°**



**F1001031°**  
**F1001032°**  
**F1001033°**  
**F1001034°**



# Doors



## SECURITY DOOR HANDLES

**82100(B)(C)L VI** (A = 21,5 MM)  
**82110(B)(C)L VI** (A = 46 MM)



**82100(B)S(P)L VI** (A = 21,5 MM)  
**82100(B)HPL VI** (A = 21,5 MM)  
**82110(B)S(P)L VI** (A = 46 MM)  
**82110(B)HPL VI** (A = 46 MM)



**82102(C)L VI** (A = 21,5 MM)  
**82112(C)L VI** (A = 46 MM)



**82102S(P)L VI** (A = 21,5 MM)  
**82102HPL VI** (A = 21,5 MM)  
**82112S(P)L VI** (A = 46 MM)  
**82112HPL VI** (A = 46 MM)



**82105(C)L VI** (A = 21,5 MM)\*  
**82115(C)L VI** (A = 46 MM)\*



**82105S(P)L VI** (A = 21,5 MM)\*  
**82105HPL VI** (A = 21,5 MM)\*  
**82115S(P)L VI** (A = 46 MM)\*  
**82115HPL VI** (A = 46 MM)\*



- \* = Left and right execution available
- C = Without cylinder opening
- L = Long backplate
- VI = Blind fixing holes (exterior)
- A = The distance from the handle opening to the uppermost fixing hole.
- B = With lower depth
- P = With cylinder protection
- S = With coated backplate in stainless steel
- H = Raised handle or raised backplate
- ° = Profile dependent

- Available anodised
- Available powder coated in more than 450 RAL colours

**82106(C)L VI** (A = 21,5 MM)\*  
**82116(C)L VI** (A = 46 MM)\*



**82108(C)L VI** (A = 21,5 MM)  
**82118(C)L VI** (A = 46 MM)



**82390-12-50°**



**82106S(P)L VI** (A = 21,5 MM)\*  
**82106HPL VI** (A = 21,5 MM)\*  
**82116S(P)L VI** (A = 46 MM)\*  
**82116HPL VI** (A = 46 MM)\*



**82108S(P)L VI** (A = 21,5 MM)\*  
**82108HPL VI** (A = 21,5 MM)\*  
**82118S(P)L VI** (A = 46 MM)\*  
**82118HPL VI** (A = 46 MM)\*



**82392-13-50°**  
**82392-14-50°**  
**82392-15-50°**



# Sliding doors



## PENTA-LOCK SLIDING DOOR HANDLES

82000(B)(C)L (VI)



82002(C)L (VI)



## BUILT-IN FINGER PULL

82191L VI



- \* = Left and right execution available
- C = Without cylinder opening
- L = Long backplate
- VI = Blind fixing holes (exterior)
- B = With lower depth
- P = With cylinder protection
- S = With coated backplate in stainless steel

- Available anodised
- Available powder coated in more than 450 RAL colours

## SECURITY SLIDING DOOR HANDLES

82140(B)(C)L (VI)



82142(C)L (VI)



82006CL (VI)\*  
82146CL (VI)\*



82140(B)(S)(P)L VI



82142S(P)L VI



82148CL VI



# Sliding doors



## BT-LOCK FINGER PULL

82180L (VI)  
82181(C)L (VI)



82092CL VI



82182(C)L (VI)



C = Without cylinder opening  
L = Long backplate  
VI = Blind fixing holes (exterior)

■ Available anodised  
■ Available powder coated in more than 450 RAL colours

## BT-LOCK AND HOOK LOCKS FINGER PULL

82090L VI  
82091(C)L VI







# Lift-slide doors



## LIFT-SLIDE DOOR HANDLES

74030(C) (VI)



74030B(C) (VI)



## SECURITY LIFT-SLIDE DOOR HANDLES

74130(B)(P) VI



C = Without cylinder opening  
L = Long backplate  
VI = Blind fixing holes (exterior)  
B = With lower depth  
P = With cylinder protection

■ Available anodised  
■ Available powder coated in more than 450 RAL colours

## FINGER PULLS

**82190L VI**



**74004-3**



**74004-4**



# Colour anodisations

---

## DESCRIPTION

Anodisation is an electrochemical treatment. Aluminium is immersed in a chemical bath. Due to the effect of an electrical current, the metal surface is given a decorative, durable, corrosion-resistant and hard-wearing oxidised layer. This aluminium oxide layer is therefore fully integrated with the underlying aluminium.

## ADVANTAGES

- Attractive appearance with the retention of its metallic look.
- Durable, corrosion-resistant and colour-fast.
- Low-maintenance.

For maximum impact choose:

**Handles  
for windows, doors and sliding doors  
in the same colour anodisation  
as the aluminium sections.**





**SOBNATUUR**



**SOBINOXANO**



**SOBC31**



**SOBC32**



**SOBC33**



**SOBC34**



**SOBC35**



**SOBCH1**



**SOBCH2**



**SOBCH3**



**SOBCH4**



**SOBOR**

**We are Sobinco. We get things done.** We specialise in the development and production of innovative locking systems and components for the aluminium windows and doors industry.

At Sobinco **the entire production process takes place under one roof.** In this way we are able to manage and control the value creation chain from start to finish. This gives us **great flexibility** and allows us **to attain sustainable results over the short term.**

**Innovation is our passion.** Our creativity, expertise and craftsmanship provide a guarantee of added value which translates into **high-quality products, easy assembly, modularity, sustainability and aesthetic comfort.**

Driven by this passion, **our team** at all times endeavours to **improve our current products and develop new ones.** To this end, we listen to the market and to our customers.

We use **high-quality materials** for our product development. These products are **exhaustively tested in line with the strictest of guidelines and quality requirements.** Every product must satisfy these as a minimum and their ratings often exceed the required standards.

We have a **strong customer focus.** Not only in the development of our products, but also in our after-sales support, during the installation process and even long afterwards.

Sobinco is a financially viable and high-tech environment where our specialists can focus on their strengths. With more than 60 years in the business, you can rest assured that we are a reliable partner, ready to seize the opportunity. Nevertheless, we remain approachable. In short, **a family atmosphere, where there is mutual respect** for management, customers, partners and employees.

**We are Sobinco. We get things done. We listen. We think in terms of opportunities. We are not afraid to roll up our sleeves.**

VAN PARYS FAMILY

PEOPLE

COMPLETE SERVICE

VERTICAL INTEGRATION

# Listen. Think. Do.

SUSTAINABLE GROWTH

INNOVATION

TOP QUALITY

FITTINGS FOR ALUMINIUM WINDOWS & DOORS

Waregemstraat 5 - 9870 Zulte - Belgium

T +32 9 388 88 81 - F +32 9 388 88 21

commercial@sobinco.com

[www.sobinco.com](http://www.sobinco.com)

**Sobinco**  
OPENS YOUR LIFE