

---

# Phantom

Concealed door hinge

---



**Sobinco**  
OPENS YOUR LIFE



---

# Phantom

Concealed o  
revealing true

---



door hinge  
e quality.

## DESCRIPTION

**Phantom** is a **three-part screwable door hinge** for open in and open out doors with flush profiles. No unsightly components are perceived when the door is closed. And when open, no hindering parts are to be seen, thanks to a **cleverly integrated cover**. They are especially suited for **contemporary and architectural use**. The Phantom hinges are **profile dependent** and will be developed on request.



## CHARACTERISTICS

- **Consists of** one frame part with integrated cover and one vent part.
- Pre-assembled parts.
- **High vent weights up to 180 kg with 2 hinges, with or without door closer.**
- **High vent weights up to 250 kg with 4 hinges, with or without door closer.**
- **Large dimensions of the vent up to 1.4 m width and 3 m height.**
- **Maximum opening angle:** profile dependent: **+/- 95°**.
- Use in combination with **door stay**.
- **Maintenance-free** with self-lubricating synthetic bushes.
- **Finishes:**
  - Standard **nature and black anodisation**.
  - Powder coated in 450 RAL colours on request.

## TESTS & RESULTAS

- CE qualified according to EN 1935 by Notified Body PIV Germany
- **Classification key:**

4	7	6	0	1	5	1	13
---	---	---	---	---	---	---	----

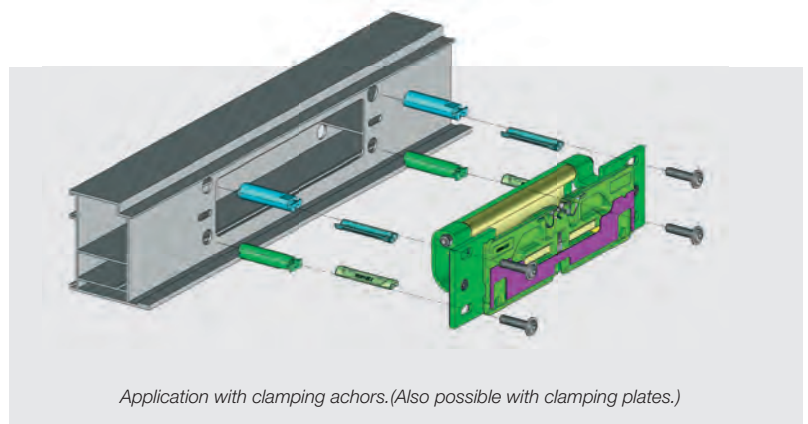
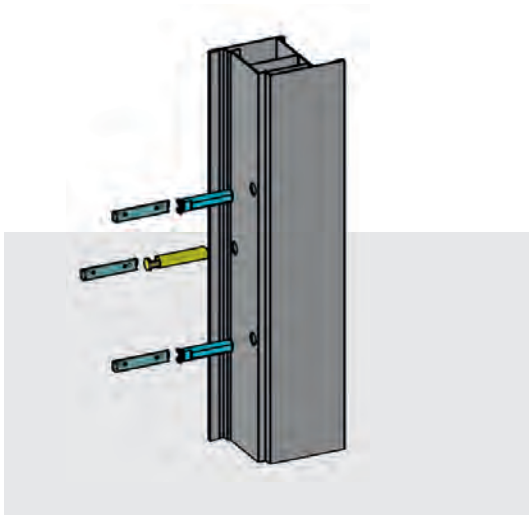
  - **4 = Intensity of use** = highest class.
  - **7 = Durability** = 200,000 cycles = highest class.
  - **6 = Weight** = 120 kg = highest class except one.
  - **5 = Corrosion resistance** = 480 hours = highest class.
  - **1** = Suited for **burglary resistant RC2 doors** (without security pins).
  - **13 = Hinge class** = highest class except one.
- Extra durability tests:
  - Internal setting up: 500,000 cycles.



## ASSEMBLY

### PRE-ASSEMBLY OF THE HINGE AND THE FIXATION IN THE FRAME PROFILE

- Mount 4 clamping anchors
- Tilt the pre-assembled hinge into the profile
- Tighten 4 screws (T25)

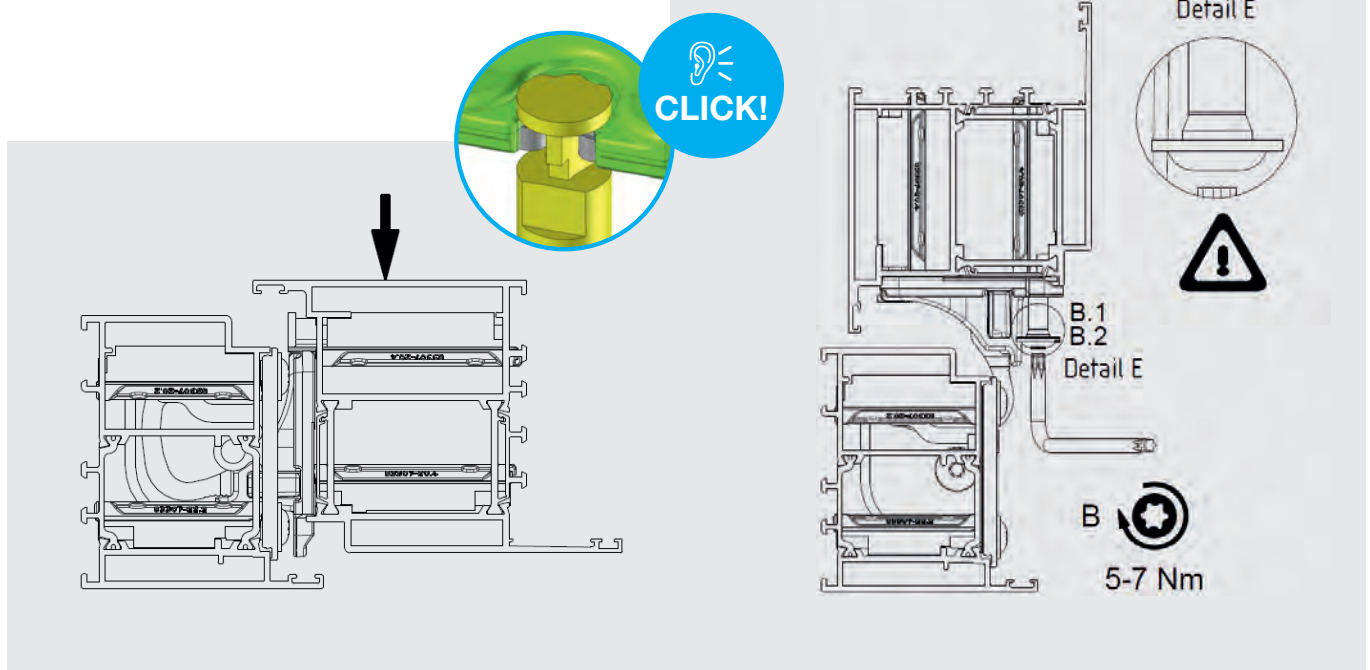


### PRE-ASSEMBLY OF THE FIXATION IN THE VENT PROFILE

- Mount 2 screw clamping anchors
- Mount 1 hook-in clamping anchor

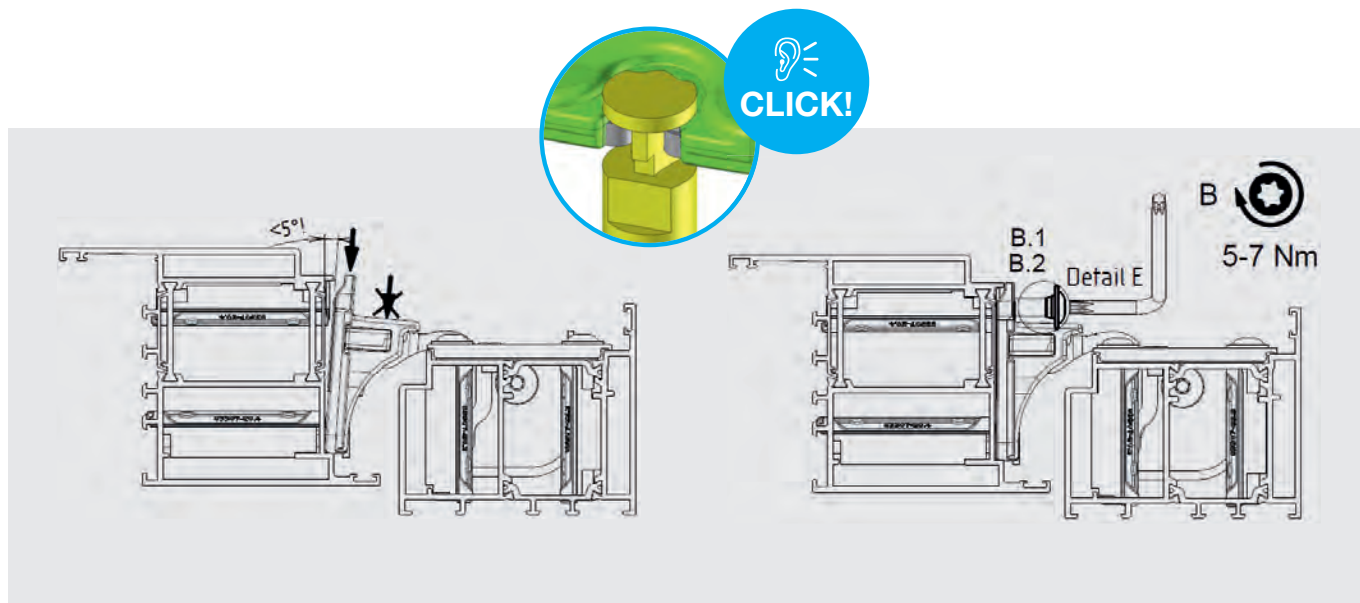
### ATTACHING VENT IN FRAME / HORIZONTAL ASSEMBLY OF THE VENT

- Attach until you hear a click sound
- **Click system** with hook-in pin
- Tighten screws after you heard a click sound.



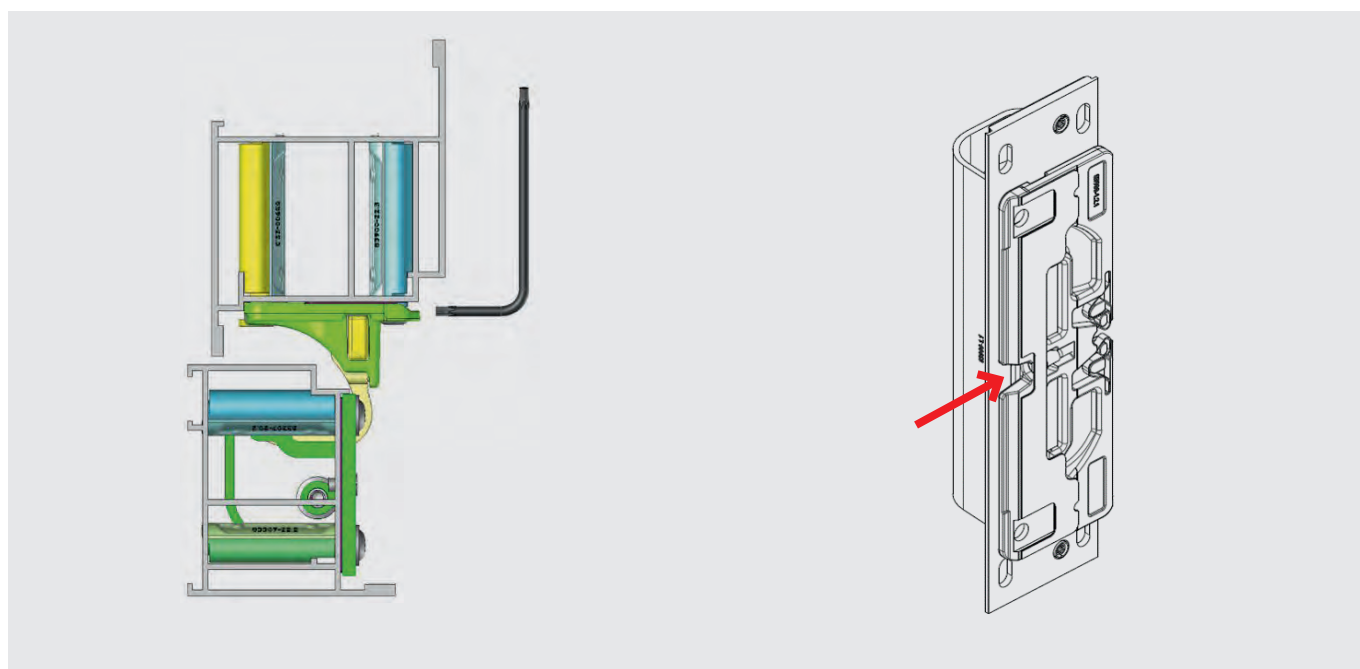
## ATTACHING VENT IN FRAME / VERTICAL ASSEMBLY OF THE VENT

- Attach until you hear a click sound
- **Click system** with hook-in pin
- Tighten screws after you heard a click sound.



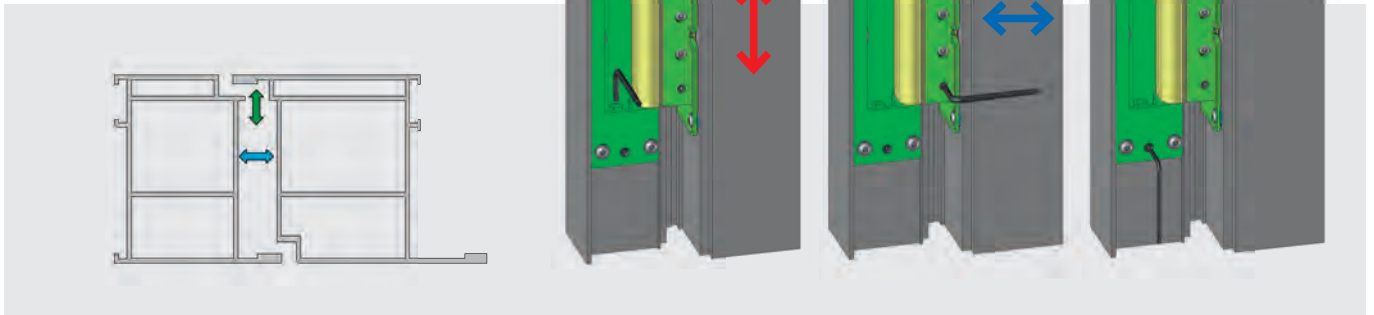
## DISASSEMBLY OF THE VENT

- Support vent
- Loosen 2 screws from vent part with torx 25 tool.
- Disassembly with torx 15 tool: 10 turns.
- After disassembly **the disassembly screw needs to be refastened** for the next assembly.



## ADJUSTMENT

- **Height adjustment:** +/- 4 mm.
- **Lateral adjustment:** +/- 3 mm.
- **Gasket pressure adjustment:** +/- 0,5 mm.



## ADVANTAGES

- Straightforward profile operations = **fast production.**
- Easy and efficient assembly and disassembly = **timesaving handling.**
- Only 2 tools needed when mounting and adjusting (torx 15 and torx 25) = **no extra expenses on tools.**
- Same hinge for left and right-handed doors = **less stock.**
- Strong hinge: high weight capacity and high durability = **the best solution for the large and heavy doors trend.**
- Slender and aesthetic design = **perfect for high-end architectural projects.**

## USP'S

- **Most stable and strongest** concealed door hinge on the market due to an ingenious design with **integrated cover.**
- Most straightforward assembly **in horizontal and vertical position** by a spring system, **without lifting the vent.**
- **Very easy disassembly** of the vent
- **Largest 3D-adjustment range**
- **Most aesthetic door hinge** with **multiple finish options in many colours.**



Sobinco **develops, produces and exports** a wide range of **aesthetic solutions** for the **easy operation** and **security** of **aluminium windows, doors and sliding doors**. Safety and aesthetic design are important aspects of the product development process, as are functionality, durability and quality. As a partner, Sobinco offers **extensive services**, from innovation in development, to flexibility in technical support and production planning, to delivery reliability for both **standard products** and **custom projects**. From our head office in Belgium, Sobinco products are exported to 60 countries around the world.



Sobinco products may be invisible to the consumer, they are nevertheless critical for the quality of the final product and contribute to creating a safe, comfortable and stylish living and working environment.



Waregemstraat 5 - 9870 Zulte - Belgium  
T +32 9 388 88 81 - F +32 9 388 88 21  
[commercial@sobinco.com](mailto:commercial@sobinco.com)  
[www.sobinco.com](http://www.sobinco.com)

**Sobinco**  
OPENS YOUR LIFE