
Edge

Handles for windows, doors and sliding doors



Sobinco
OPENS YOUR LIFE

Simplicity
is the keynote
of all true elegance.

Coco Chanel



DESIGN

Sobinco has developed a range of **exclusive** handles and finger pulls in which the **sleek design of the Edge handle** can be used for any type of element. The handles and finger pulls for windows, doors and sliding doors ensure a uniform look, suitable for **modern-day architecture**.

FINISHES

The Sobinco handles and finger pulls are manufactured from carefully selected, **high-quality materials**.

All handles can be **polyester powder coated** in more than 450 RAL colours. Most handles can be **anodised** in various shades.

All handles for doors, sliding doors and lift-slide doors are available without a cylinder opening.

Various fixing holes are possible depending on the choice of lock. **More information can be found in our catalogue.**

ERGONOMICS

The finger pulls have a wide and deep cut-out which ensures **ergonomic** operation. The new finger pull is not only available for the cylinder-operated BT-Lock, but there are also varieties for our other types of sliding window locks, such as the handle-operated Penta-Lock, lift-slide locks and hook locks.

USER-FRIENDLINESS

Thanks to the **integrated spring system**, the Edge door handle always returns to its original starting position, also after intensive use.

The Edge door handle with integral click system can be rotated through 360° in four stages of 90° each.

With the exception of the fixed door handles and door pulls, the Edge door handles can be used on both the left and the right.

BURGLARY RESISTANCE

The **Edge Security** door handles and finger pulls are burglar-resistant. The handles come with a long backplate in solid aluminium, as a result of which the cylinder is practically inaccessible and the long backplate is almost impossible to remove.

The SKG Institute has awarded **two stars** to the Edge Security outside handles. These handles are fitted with invisible fixing holes.



The SKG Institute has awarded **three stars** to the Edge Security outside handles with cylinder protection.



The SKG Institute has awarded **three stars** to the lockable handles (30000-673 CYL, 35300-682-..CYL)



The SKG Institute has awarded **three stars** to the Edge Security finger pulls.



BELGIAN TOP QUALITY

Sobinco has an extremely large **test department** where tests are carried out continuously, such as cyclical and strength tests. Likewise, break-in tests, corrosion-resistance tests, and air, wind and water tests are also performed internally, in compliance with the most recent European or country-specific directives and quality standards.

STANDARDS

The Edge **window handles** meet the European standard EN13126-3:2012 with the following classification:

- **Standard window handles with fixed square spindle:**

1	4/180	-	0	1	4	0	3/C1	-
---	-------	---	---	---	---	---	------	---

- **Window handles with cylinder and fixed square spindle:**

1	4/180	-	0	1	4	2/2	3/C1	-
---	-------	---	---	---	---	-----	------	---

- **Window handles with button and fixed square spindle:**

1	4/180	-	0	1	4	2/1	3/C1	-
---	-------	---	---	---	---	-----	------	---

- **Standard window handles with fork:**

1	5/180	-	0	1	4	0	3/C2	-
---	-------	---	---	---	---	---	------	---

- **Window handles with cylinder and fork:**

1	5/180	-	0	1	4	2/2	3/C2	-
---	-------	---	---	---	---	-----	------	---

The Edge **door handles** meet the European standard EN1906:2012 with the following classification:

- **Standard door handles:**

4	7	-	0	0	5	0	A
---	---	---	---	---	---	---	---

- **Edge Security door handles:**

4	7	-	0	0	5	1	A
---	---	---	---	---	---	---	---

- **Edge Security door handles with cylinder protection:**

4	7	-	0	0	5	2	A
---	---	---	---	---	---	---	---

- **Edge finger pulls:**

4	-	-	0	0	5	0	-
---	---	---	---	---	---	---	---

- **Edge Security finger pulls:**

4	-	-	0	0	5	1	-
---	---	---	---	---	---	---	---

The Edge handles achieve a **high corrosion-resistant class 5** (480u - EN1670).





Overview handles

WINDOWS



30000-673
F1001004



30000-674
F1001018



30000-673 CYL
F1001005



31000-673 CYL
F1001006



30000-682-..

DOORS



82301(VI)
82302(VI)



82600(C)(L) (VI)
82610(C)L VI



82602(C)(L) (VI)
82612(C)L VI



82605(C)L (VI)
82605
82615(C)L VI



82606(C)(L) (VI)
82616(C)L VI



82608(C)(L) (VI)
82618(C)L VI



F1001039
F1001035
F1001036
F1001037
F1001038

LIFT-SLIDE/SLIDING DOORS



82600(C)L (VI)



82602(C)L (VI)



82740(C)L (VI)
82740S(P)L VI



82742(C)L (VI)
82742S(P)L VI



82746CL (VI)



82748CL (VI)



82730(C) (VI)
74023P VI

FINGER PULLS



82791L VI



82780(C)L (VI)
82781(C)L (VI)



82782(C)L (VI)



82783 (VI)
82784(C) (VI)



82690L VI
82691(C)L VI



82692CL VI

C = Without cylinder opening
 L = Long backplate
 VI = Blind fixing holes (exterior)
 P = With cylinder protection
 S = With coated backplate in stainless steel
 H = Raised handle or raised backplate
 .. = Spindle length = 25, 38, 65 of 90 mm



30000-688-..



35000-682-..



35300-682-.. K

60000-682
60000-682 CYL60000-683
60000-683 CYL
 35300-682-.. CYL
 35350-682-.. CYL
 36000-682-.. CYL
 36500-682-.. CYL

 82700(C)L (VI)
 82700S(P)L VI
 82700HPL VI
 82710(C)L (VI)
 82710S(P)L VI
 82710HPL VI

 82702(C)L (VI)
 82702S(P)L VI
 82702HPL VI
 82712(C)L (VI)
 82712S(P)L VI
 82712HPL VI

 82705(C)L (VI)
 82705S(P)L VI
 82705HPL VI
 82715(C)L (VI)
 82715S(P)L VI
 82715HPL VI

 82706(C)L (VI)
 82706S(P)L VI
 82706HPL VI
 82716(C)L (VI)
 82716S(P)L VI
 82716HPL VI

 82708(C)L (VI)
 82708S(P)L VI
 82708HPL VI
 82718(C)L (VI)
 82718S(P)L VI
 82718HPL VI

 82390-12-50
 82391-13-50
 82391-14-50
 82391-15-50


74031(C) (VI)



74031H(C) (VI)



74131 VI



74131H VI



74131P VI



74131HP VI



82790L VI



74004-1



74004-2



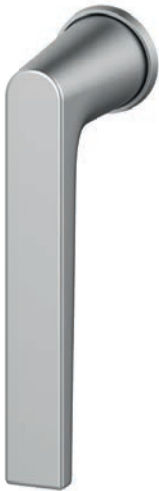
A1005288

Windows

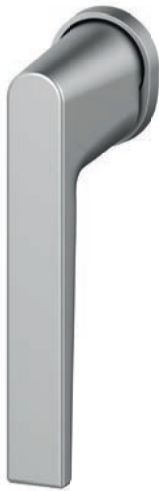


BASELESS HANDLES

30000-673



30000-674



30000-673CYL



31000-673CYL*



HANDLES WITH BASE

60000-682



60000-682CYL



60000-683*



60000-683CYL*



* = Left and right execution available (only for tilt-turn windows)
 .. = Spindle length = 25, 38, 65 of 90 mm
 - = Free run

■ Available anodised

■ Available powder coated in more than 450 RAL colours

△ Coated finish only available for spindle lengths of 25 and 38 mm

30000-682-..



30000-688-..



35300-682-.. K



35000-682-..

36000-682-.. CYL⁻ △

36500-682-..CYL^{SKG} △



35300-682-.. CYL



35350-682-XX CYL

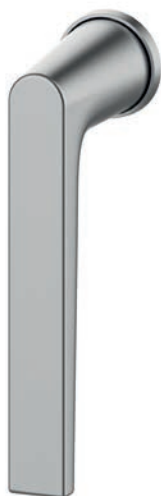


Windows



BASELESS HANDLES

F1001004



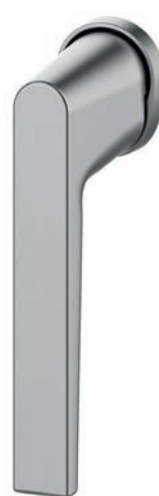
F1001005



F1001006*



F1001018



* = Left and right execution available (only for tilt-turn windows)

■ Available anodised

■ Available powder coated in more than 450 RAL colours

△ Coated finish only available for spindle lengths of 25 and 38 mm



Doors



DOOR HANDLES

82600(C)L
82600(C)L VI (A = 21,5 MM)
82610(C)L VI (A = 46 MM)
■ ■



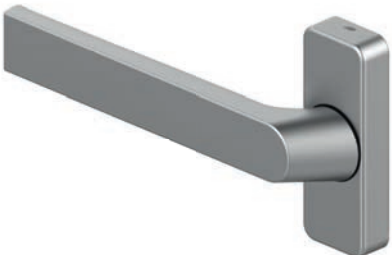
82602(C)L
82602(C)L VI (A = 21,5 MM)
82612(C)L VI (A = 46 MM)
■ ■



82600 (VI)
■ ■



82602 (VI)
■ ■



* = Left and right execution available

** = Without backplate

C = Without cylinder opening

L = Long backplate

VI = Blind fixing holes (exterior)

A = The distance from the handle opening to the uppermost fixing hole.

° = Profile dependent

■ Available anodised

■ Available powder coated in more than 450 RAL colours

82605(C)L*

82605(C)L VI (A = 21,5 MM)*

82615(C)L VI (A = 46 MM)*

82605**



82606(C)(L) VI*

82606 (VI)

82606(C)L VI (A = 21,5 MM)*

82616(C)L VI (A = 46 MM)*



82301(VI)

82302(VI)



82608(C)

82608(C)L

82608(C)L VI (A = 21,5 MM)

82618(C)L VI (A = 46 MM)



F1001039°



F1001035°

F1001036°

F1001037°

F1001038°



Doors



SECURITY DOOR HANDLES

82700(C)L
82700(C)L VI (A = 21,5 MM)
82710(C)L (VI) (A = 46 MM)



82702(C)L
82702(C)L VI (A = 21,5 MM)
82712(C)L (VI) (A = 46 MM)



82705(C)L*
82705(C)L VI (A = 21,5 MM)*
82715(C)L (VI) (A = 46 MM)*



82700S(P)L VI (A = 21,5 MM)
82700HPL VI (A = 21,5 MM)
82710S(P)L VI (A = 46 MM)
82710HPL VI (A = 46 MM)



82702S(P)L VI (A = 21,5 MM)
82702HPL VI (A = 21,5 MM)
82712S(P)L VI (A = 46 MM)
82712HPL VI (A = 46 MM)



82705S(P)L VI (A = 21,5 MM)*
82705HPL VI (A = 21,5 MM)*
82715S(P)L VI (A = 46 MM)*
82715SPL VI (A = 46 MM)*



* = Left and right execution available

** = Without backplate

C = Without cylinder opening

L = Long backplate

VI = Blind fixing holes (exterior)

A = The distance from the handle opening to the uppermost fixing hole.

P = With cylinder protection

H = With raised backplate

S = With coated backplate in stainless steel

° = Profile dependent

■ Available anodised

■ Available powder coated in more than 450 RAL colours

82706(C)L*

82706(C)L VI (A = 21,5 MM)*

82716(C)L (VI) (A = 46 MM)*



82708(C)L

82708(C)L VI (A = 21,5 MM)

82718(C)L (VI) (A = 46 MM)



82390-12-50°



82706S(P)L VI (A = 21,5 MM)*

82706HPL VI (A = 21,5 MM)*

82716S(P)L VI (A = 46 MM)*

82716HPL VI (A = 46 MM)*



82708S(P)L VI (A = 21,5 MM)

82708HPL VI (A = 21,5 MM)

82718S(P)L VI (A = 46 MM)

82718HPL VI (A = 46 MM)



82391-13-50°

82391-14-50°

82391-15-50°



Sliding doors



PENTA-LOCK SLIDING DOOR HANDLES

82600(C)L (VI)



82602(C)L (VI)



82606CL (VI)



FINGER PULLS

82791L VI*



- * = Left and right execution available
 • = Not available in the colour inoxlook
 C = Without cylinder opening
 L = Long backplate
 VI = Blind fixing holes (exterior)
 P = With cylinder protection
 S = With coated backplate in stainless steel

- Available anodised
 ■ Available powder coated in more than 450 RAL colours

SECURITY SLIDING DOOR HANDLES

82740(C)L (VI)



82742(C)L (VI)



82746CL (VI)*



82740S(P)L VI



82742S(P)L VI



82748CL VI



Sliding doors



BT-LOCK FINGER PULLS

82780(C)L (VI)*



82781(C)L (VI)*



82782(C)L (VI)*



82690L VI*



82691(C)L VI*



82692CL VI*

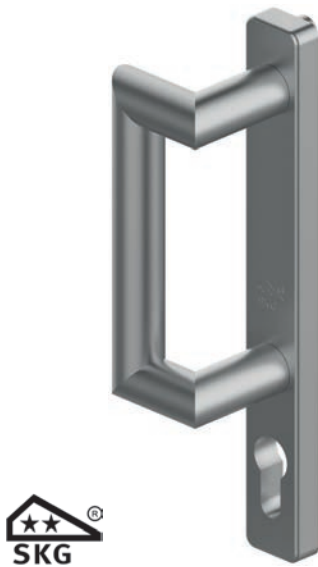


- * Left and right execution available
 • = Not available in the colour inoxlook
 C = Without cylinder opening
 L = Long backplate
 VI = Blind fixing holes (exterior)
 P = With cylinder protection

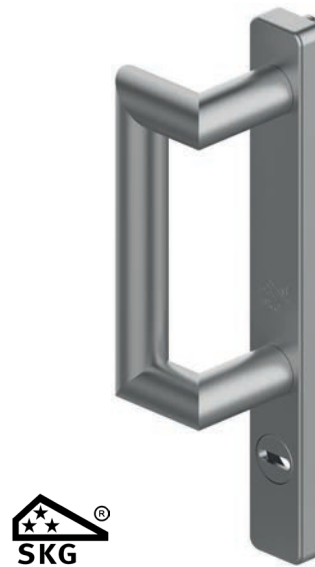
- Available anodised
 ■ Available powder coated in more than 450 RAL colours

SECURITY SLIDING DOOR PULLS

82730(C) (VI)*



74023P VI*



SECURITY FINGER PULLS

82783(C) (VI)

82784(C) (VI)



Lift-slide doors



LIFT-SLIDE DOOR HANDLES

74031(C) (VI)



74031H(C) (VI)



74131 VI



74131P VI



74131H VI



74131HP VI



* Left and right execution available
• = Not available in the colour inoxlook
C = Without cylinder opening
L = Long backplate
VI = Blind fixing holes (exterior)
P = With cylinder protection

■ Available anodised
■ Available powder coated in more than 450 RAL colours

FINGER PULLS

82790L VI*



74004-1



74004-2



A1005288



Colour anodisations

DESCRIPTION

Anodisation is an electrochemical treatment. Aluminium is immersed in a chemical bath. Due to the effect of an electrical current, the metal surface is given a decorative, durable, corrosion-resistant and hard-wearing oxidised layer. This aluminium oxide layer is therefore fully integrated with the underlying aluminium.

ADVANTAGES

- Attractive appearance with the retention of its metallic look.
- Durable, corrosion-resistant and colour-fast.
- Low-maintenance.

For maximum impact choose:

**Handles
for windows, doors and sliding doors
in the same colour anodisation
as the aluminium sections.**

**SOBNATUUR****SOBINOXANO****SOBC31****SOBC32****SOBC33****SOBC34****SOBC35****SOBCH1****SOBCH2****SOBCH3****SOBCH4****SOBOR**

We are Sobinco. We get things done. We specialise in the development and production of innovative locking systems and components for the aluminium windows and doors industry.

At Sobinco **the entire production process takes place under one roof.** In this way we are able to manage and control the value creation chain from start to finish. This gives us **great flexibility** and allows us **to attain sustainable results over the short term.**

Innovation is our passion. Our creativity, expertise and craftsmanship provide a guarantee of added value which translates into **high-quality products, easy assembly, modularity, sustainability and aesthetic comfort.**

Driven by this passion, **our team** at all times endeavours to **improve our current products and develop new ones.** To this end, we listen to the market and to our customers.

We use **high-quality materials** for our product development. These products are **exhaustively tested in line with the strictest of guidelines and quality requirements.** Every product must satisfy these as a minimum and their ratings often exceed the required standards.

We have a **strong customer focus.** Not only in the development of our products, but also in our after-sales support, during the installation process and even long afterwards.

Sobinco is a financially viable and high-tech environment where our specialists can focus on their strengths. With more than 60 years in the business, you can rest assured that we are a reliable partner, ready to seize the opportunity. Nevertheless, we remain approachable. In short, **a family atmosphere, where there is mutual respect** for management, customers, partners and employees.

We are Sobinco. We get things done. We listen. We think in terms of opportunities. We are not afraid to roll up our sleeves.

VAN PARYS FAMILY

PEOPLE

COMPLETE SERVICE

VERTICAL INTEGRATION

Listen. Think. Do.

SUSTAINABLE GROWTH

INNOVATION

TOP QUALITY

FITTINGS FOR ALUMINIUM WINDOWS & DOORS

Waregemstraat 5 - 9870 Zulte - Belgium

T +32 9 388 88 81 - F +32 9 388 88 21

commercial@sobinco.com

www.sobinco.com

Sobinco
OPENS YOUR LIFE