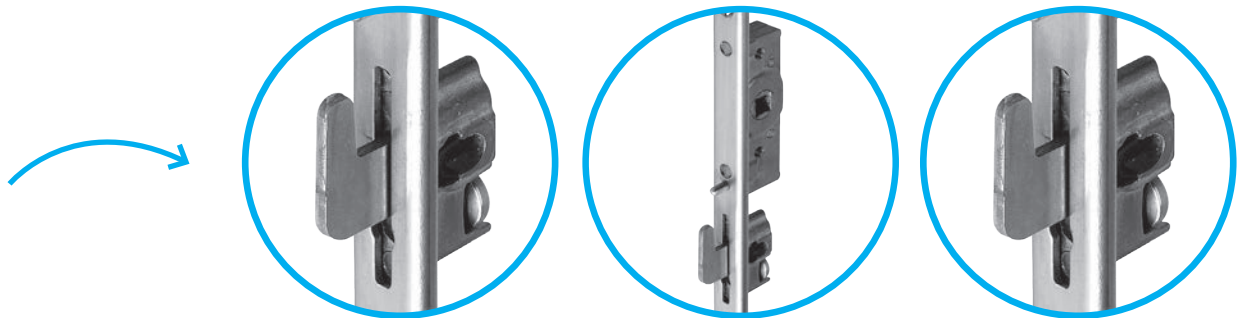

B-Slide

Modular multi-point lock



Sobinco
OPENS YOUR LIFE

MULTI-POINT LOCK & CONTROL

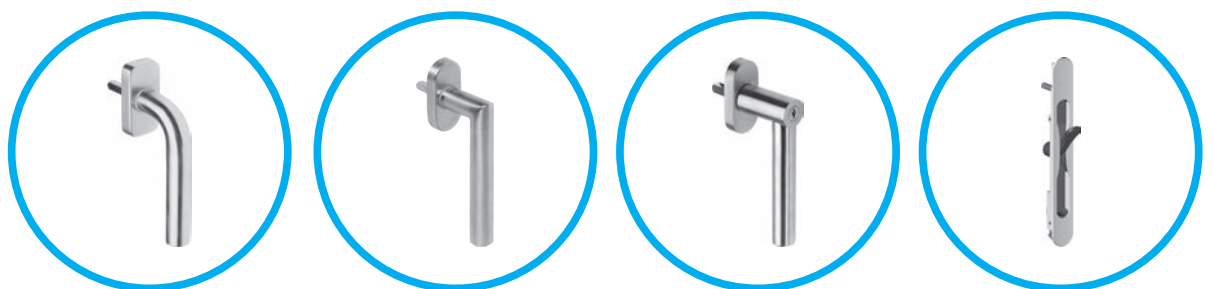


DESCRIPTION

- Multi-point lock for aluminium and PVC sliding doors and sliding windows.
- **Modular:** the central lock is easily expandable to a multi-point lock (3-pointlock and more) with extensions. The central lock and the extensions contain an adjustable hook bolt.
- Opening and closing of the sliding door is by means of a rod, that slides in the face plate causing the hook bolts to move up and down.
- The multipoint lock can be operated by a window handle or a finger pull and can be locked with a profile cylinder.

CHARACTERISTICS

- Manufactured from **high quality materials**. The faceplate, rod, hook bolts and the screws are in stainless steel. The spindle follower is made of brass.
- **Quick and easy installation** with special connections between the central lock and the extensions.
- Lock with square spindle is available with **3 different backsets:** 11.6, 14.1 and 20.6 mm.
- Multi-point lock is available with a U-shaped faceplate of 15.2 mm.
- The **extensions** are available in **2 lengths:** 350 mm and 640 mm.
- **Easy adjustment** of the hook bolts: 4 mm.
- **Anti-fault control:** the hook bolts stay in place in open position.
- **Lockcase support screws:** when using a single handle, adjustable support screws prevent twisting of the lockcase.
- The upward sliding hook bolt prevents the lifting of the vent.
- Locking with standard European cylinder.
- Guiding pieces enable the hook bolts to slide better in the profile groove and are better protected.
- **Window handles:** available in several RAL colours. B-Slide can also be operated with Sobinox handles in stainless steel or Horizon handles.
- **Finger pull:** available in anodised or powder coated in **more than 450 RAL colours**.



ROLLER ASSEMBLIES

DESCRIPTION

Wheel housings for sliding windows fitted with **high-quality wheels**, available in **stainless steel** or **high-quality synthetic material**. These wheels can tolerate **heavy weights** without deforming them. The pre-assembled brushes keep the track clean and **prolong the lifetime**.

CHARACTERISTICS

High-quality synthetic material

- Vent weights up to **300 kg** with **2 carriages** (20,000 cycles).
- Vent weights up to **400 kg** with **4 carriages** (20,000 cycles).
- Declaration of Performance in conformity with EN13126-15.

Stainless steel

- Vent weights up to **300 kg** with **2 carriages** (10,000 cycles).
- Declaration of Performance in conformity with EN13126-15.

ADVANTAGES

- Heavy weights
- High number of cycles
- Easy assembly
- Low-maintenance
- High quality
- Prolonged lifetime



Synthetic material



Stainless steel



Sobinco **develops, produces and exports** a wide range of **aesthetic solutions** for the **easy operation** and **security** of **aluminium windows, doors and sliding doors**. Safety and aesthetic design are important aspects of the product development process, as are functionality, durability and quality. As a partner, Sobinco offers **extensive services**, from innovation in development, to flexibility in technical support and production planning, to delivery reliability for both **standard products** and **custom projects**. From our head office in Belgium, Sobinco products are exported to 60 countries around the world.



Sobinco products may be invisible to the consumer, they are nevertheless critical for the quality of the final product and contribute to creating a safe, comfortable and stylish living and working environment.



Waregemstraat 5 - 9870 Zulte - Belgium
T +32 9 388 88 81 - F +32 9 388 88 21
commercial@sobinco.com
www.sobinco.com

Sobinco
OPENS YOUR LIFE